



Exterior Water Pump Range

Easy to fit for high flow rates for your van!



Whale Watermaster® with *Easi-Push™* Plug

Whale Watermaster® with *Easi-Squeeze™* Plug

Whale Watermaster® with *Easi-Press™* Plug

EP1312 or EP1612

EP1322 or EP1622

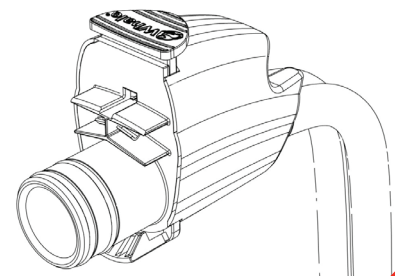
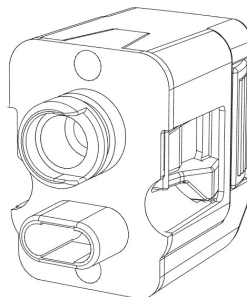
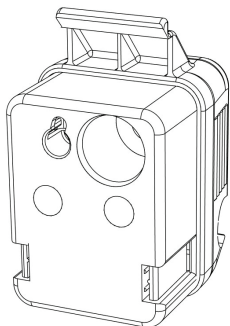
EP1642

Compatible with Whale Watermaster® Exterior Socket.

Compatible with Truma® Crystal II Filter and Crystal II Compact Housings.

Compatible with Truma® Ultraflow Filter and Ultraflow Compact Housings.

Whale® Has a Plug for You



Plugs available to fit water sockets fitted on leading UK caravan models.

Now available from your local caravan retailer



Exterior Water Pump Range



Whale WATERMASTER with Easi-Push™ Plug



Whale WATERMASTER with Easi-Squeeze™ Plug



Whale WATERMASTER with Easi-Press™ Plug

Your Whale Watermaster® with Easi-Push™ Plug includes:

- Easi-Push™ Plug
- Premium (EP1312) or High Flow Pump (EP1612)
- Extra flexible hose
- Protected electrics
- High quality dust cover
- Safety strainer
- Narrow pump design
- Built in hose holder

Your Whale Watermaster® with Easi-Squeeze™ Plug includes:

- Easi-Squeeze™ Plug
- Premium (EP1322) or High Flow Pump (EP1622)
- Extra flexible hose
- Protected electrics
- High quality dust cover
- Safety strainer
- Narrow pump design

Your Whale Watermaster® with Easi-Press™ Plug includes:

- Easi-Press™ Plug
- High Flow Pump (EP1642)
- Extra flexible hose
- Protected electrics
- Protective plug cover
- High quality dust cover
- Safety strainer
- Narrow pump design
- Built in hose holder

Performance Data*		
Product Code	P1312 or EP1322	EP1612 or EP1622 or EP1642
Discharge Head	Flow Rate Per Minute/ Current Draw	
0m (0ft)	13.2 ltrs 3.6 amps	15.8 ltrs 3.8 amps
1m (3ft)	11.75 ltrs 3.3 amps	14.8 ltrs 3.7 amps
3m (9ft)	9.25 ltrs 2.9 amps	12.8 ltrs 3.5 amps

Model Specifications	
Model	EP1612, EP1622, EP1312, EP1322 EP1642
Weight	0.5kg (1.0g lbs)
Fuse	5 amp Automotive
Materials	Pump Body: ABS, Seals: Nitrile® Strainer: Polypropylene, Impeller: Stainless Steel/Unfilled PP, Cable: PVC, Grease Seal: Nitrile®, Wire: PVC insulated copper, Hose: PVC, Plug: PBT or ABS (EP1642 only)

* Based on tests carried out in Whale® Laboratory, information correct January 2014.

All available NOW from your local caravan retailer

Whale

Tel: 028 9127 0531 Email: info@whalepumps.com

Proud to Manufacture in the UK

©2014 Copyright Munster Simms Engineering (also trading as Whale) all rights reserved.
Whale's policy is one of continuous improvement and we reserve the right to change specifications without prior notice. Illustrations are for guidance purposes only.
WHALE®, WATERMASTER®, WHALE WATERMASTER®, EASI-PRESS™, EASI-SQUEEZE™ and EASI-PUSH™ are trade names of Munster Simms Engineering Limited, Bangor, Northern Ireland (also trading as Whale).