

Micro Photoelectric Smoke Alarm User Manual OM100H-M

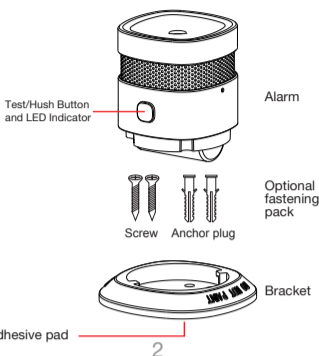


PHOTOELECTRIC

Please read this User Manual carefully before operation.
The illustrations in the manual are for reference purposes only.

This product is a photoelectric smoke alarm - a smoke warning device. Photoelectric smoke alarms are more effective at detecting slow, smoldering fires that can smolder for hours before bursting into flames, such as cigarettes burning in couches or bedding. Please note, it cannot detect gas, heat or flame. It cannot prevent or put out fires. Once smoke is detected, the red LED will flash rapidly and the siren will sound. Smoke alarms should be installed in all living areas, hallways and bedrooms etc., anywhere fires could start.

1



SPECIFICATIONS

Model No.	OM100H-M
Operating Voltage	3VDC
Battery	CR123A Lithium battery
Static Current	≤10uA
Alarm Current	≤60mA
Sound Level	85dB/3m
Installation	Ceiling mounted
Temperature Range	-10°C ~ +50°C
Humidity Range	≤95% RH
Dimensions	60 x 60 x 49.2mm

3

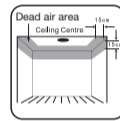
- This smoke alarm is designed specifically for domestic use, not commercial use.
- Please avoid installation in or adjacent to damp areas such as bathrooms or laundries. Avoid dusty areas such as attics or draughty places near air conditioners or ceiling fans etc.
- Please keep alarm clean, and do not let dust accumulate on it. It is recommended that you clean it every 6 months with a soft damp cloth. Also use your household vacuum and a soft brush attachment to clean around any openings including the mesh grill.
- The effective lifespan of the alarm is 10 years. Please replace every 10 years. The manufacture date is located on the under side of the alarm.
- For checking any fault occurring after installation, please refer to the Troubleshooting Guide on page 8.

Flat ceiling mounting

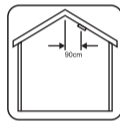
The best location for a smoke alarm is near the centre of the ceiling where smoke accumulates. Do not install the alarm in the dead air areas around the perimeter of the room (as shown in the diagram below). Keep at least 30cm away from lights or other fixtures and do not locate directly above heat sources such as a log burner. If a hallway is longer than 12m, please install at least 2 smoke alarms.

Sloping ceiling mounting

The dead air at the peak of a sloped ceiling may prevent the smoke from reaching the alarm in time to provide an early warning. So install the alarm on the ceiling at least 90cm from the highest point.



Flat Ceiling

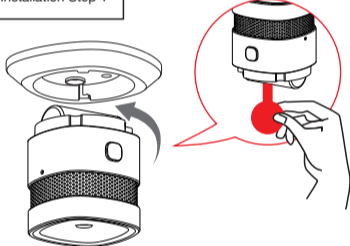


Sloping Ceiling

4

5

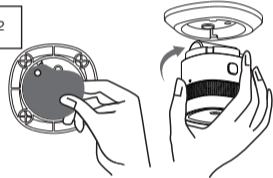
Installation Step 1



- Rotate the alarm body anticlockwise to separate from bracket, then remove battery insulating strip to power up the alarm.

6

Installation Step 2



- Ensure the desired ceiling location is free of dust, dirt or flaking paint. Remove the protective membrane from the adhesive pad on the mounting bracket. Press the bracket firmly against the ceiling for 10 seconds, allowing the self adhesive pad to stick securely to the ceiling. Attach the alarm to the mounting bracket and turn clockwise to lock into place.
- If mounting to a rough or uneven surface, the screw pack can be used to attach the bracket. Mark the hole positions by holding the bracket against the ceiling. Drill 5mm holes for the plastic plugs, inserting them and screwing on the bracket.

7

Status	Light	Alarm Sound
Normal	Red LED flashes every 53 seconds	No
Testing	Red LED flashes quickly	Rapid beeps
Alarm	Red LED flashes quickly	Rapid beeps
Hush Mode	Red LED flashes once every 10 seconds	No
Low Power	Red LED flashes once every 53 seconds	One beep every 53 seconds
Fault	Red LED flashes twice every 53 seconds	Two beeps every 53 seconds

TROUBLESHOOTING GUIDE

If the smoke alarm does not operate correctly, please follow the procedures below to troubleshoot.

- If the alarm does not sound, please check whether the alarm is properly attached to the mounting bracket, or if the battery is installed.
- If the battery runs low (see Low Power in the table above), please replace the battery immediately.
- False alarms caused by small crawling insects or dust etc. can be rectified by vacuuming the alarm (pg 11).

8

Hush Function

Please make sure there is no real fire danger when using the hush function. If non-emergency smoke (e.g. steam) causes nuisance alarms, please do not stop alarm by blocking or removing the smoke detector. Press the hush/test button to stop alarm temporarily. After 10 minutes the smoke detector will revert to normal operation.



Press and hold the test button to test the alarm. The alarm siren will sound. This means the smoke detector is working normally. The alarm will stop sounding after releasing the test button. It is recommended to test the smoke alarm weekly. Do not use an open flame to test the smoke alarm.

9

- The battery is designed to last the life of the alarm (10 years). However, if it expires before the alarm replacement date, the battery can be replaced with another CR123A or CR17335 3V battery.



- When replacing battery, ensure the positive and negative markings are in the correct orientation.

10

TIPS FOR FIRE SAFETY

- Combustible liquids such as fuel should be stored in safe places.
- Please do not smoke in bed or leave unattended cooking.
- If plugs, switches, sockets or electric wires etc. are broken, frayed or cracked, please replace them immediately.
- If using electric home appliances such as heaters, do not overload the circuit. Regularly inspect appliances to prevent occurrence of fires.
- Keep portable heaters and open fire such as candles away from flammable materials.
- Keep matches and lighters away from children.
- Make sure there is at least one working fire extinguisher on every floor and an additional one in the kitchen.
- For multi-level homes, make sure fire escape ladders or other reliable means of escape are available in case stairs are blocked.
- Create a Household Evacuation Plan. Make sure all family members know what to do when a fire alarm occurs.

11

- Install smoke alarms correctly (see page 5). Keep alarms clean and do not let dust accumulate on them. Test smoke alarms at least once every month to make sure they are working properly. If not please replace them immediately.

IMPORTANT

Newfield Group NZ warrants to the original purchaser each new smoke alarm to be free from defects in material and workmanship under normal use and service for a period of seven years from the date of purchase.

This warranty does not cover damage resulting from accident, misuse or abuse or lack of reasonable care of the product. This warranty is in lieu of all other express warranties, obligations or liabilities.

THE IMPLIED WARRANTIES OF MERCHANTABILITY AND FITNESS FOR A PARTICULAR PURPOSE ARE LIMITED TO A PERIOD OF SEVEN YEARS FOR THE SMOKE ALARM FROM PURCHASE DATE.

IN NO CASE SHALL WE BE LIABLE FOR ANY INCIDENTAL OR CONSEQUENTIAL DAMAGES FOR BREACH OF THIS OR ANY OTHER WARRANTY, EXPRESS OR IMPLIED, WHATSOEVER, EVEN IF THE LOSS OR DAMAGE IS CAUSED BY ITS NEGLIGENCE OR FAULT.



Distributed in New Zealand by
Newfield Group
www.newfield.co.nz

Note

These instructions are for your reference only and are subject to change without notice.