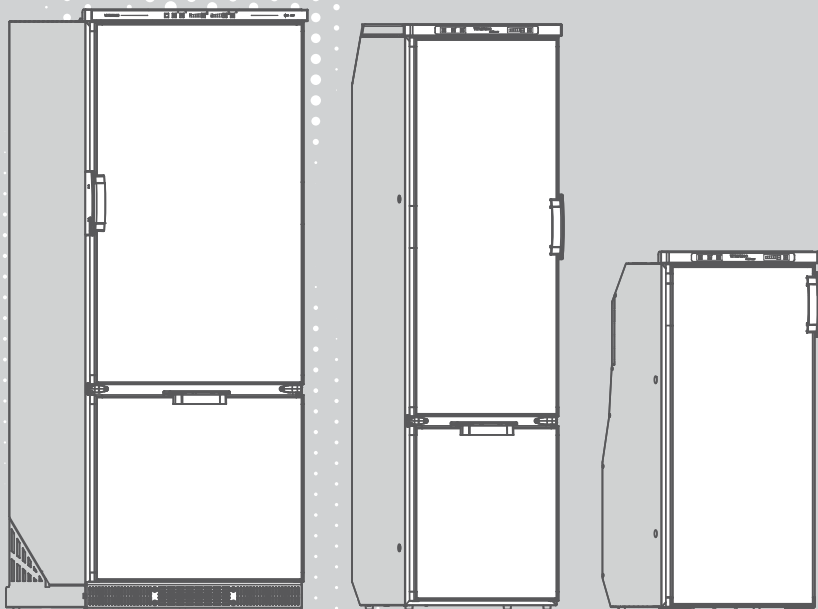


ENG

VITRIFRIGO

COOL AND BEYOND

INSTRUCTION MANUAL **SERIES SLIM**



THANK YOU FOR PURCHASING A VITRIFRIGO PRODUCT

Index

1. INTRODUCTION	20
2. GENERAL WARNINGS	20
Destination of the product	21
Receipt	21
Installation	21
Maintenance and safety	22
Disposal	22
3. PURPOSE OF THE MANUAL	23
Identification of the manufacturer	23
4. DESCRIPTION OF THE APPLIANCE	23
5. INSTALLATION	25
6. DOOR OPENING INVERSION	25
Door removal	25
Bottom hinge removal	26
Hinges inversion	26
Feedback inversion	26
Door assembly	26
Door handle inversion	26
7. FINISHING PANEL REPLACEMENT	26
8. ELECTRICAL CONNECTION	26
9. START-UP	27
Control Panel Slim 90 and 150	28
Control Panel Slim 250	28
On / Standby	28
Night mode	29
Turbo mode	29
Temperature settings Slim 90 and 150	29
Temperature settings Slim 250	30
Vent position	30
Fruit compartment	30
Defrosting Slim 90 and 150	31
Defrosting Slim 250	31
LED board replacement	31
Drawer removal Slim 150 and 250	31
10. MAINTENANCE AND ASSISTANCE	32
Cleaning	32
Unused for long periods	32
Disposal	32
11. WHAT TO DO IF THE FRIDGE DOESN'T WORK	32
12. ALARMS	33
ANNEXES	82

1. INTRODUCTION

Dear client:

Thank you for choosing one of our products. Vitrifrigo hopes that you will be completely satisfied with your purchase. This manual is considered an integral part of the refrigerator and must follow the sales path to the user.

It can be found on the Vitrifrigo website www.vitrifrigo.com.

Each refrigerator, before being shipped, is thoroughly checked and tested to ensure it operates correctly. For more information or for any clarification, please contact one of our service centres or any of our offices directly.


Vitri Alceste

Models

SLIM 90 CHR	SLIM 150 CHR	SLIM 250 CHR
-------------	--------------	--------------

2. GENERAL WARNINGS

- The manual refers to the models of the SLIM series.
- Read this manual carefully before using the refrigerator.

ATTENTION	Fire risk. The appliance contains flammable gas (propane R290 or isobutane R600a).	
ATTENTION	Place the product in an environment of suitable size.	
ATTENTION	In the event of a refrigerant leak, avoid using naked flames, move any flammable objects away from the product and ventilate the room immediately.	
ATTENTION	Failure to comply with European laws, regulations and standards for assembly will void the warranty.	
ATTENTION	Do not modify the refrigerator unless the modification is authorized and carried out by the manufacturer or its agents.	
ATTENTION	Only use original and approved spare parts.	
ATTENTION	The performance of the refrigerator can be affected by the proximity of heat sources, such as an oven or stove. Adequately insulate the refrigerator from heat sources.	
ATTENTION	The electrical and refrigeration system circuits must only be installed by qualified personnel.	
ATTENTION	Install the refrigerator in accordance with local/national laws.	
ATTENTION	The refrigerator must be installed to allow easy access for maintenance and repairs.	
ATTENTION	Never expose the fridge to rain	

ATTENTION Never open or damage the cooling system located on the back of the refrigerator. The cooling system is pressurized and contains substances harmful to human health.

Destination of the product:

- This appliance is designed to be used in applications such as motorhomes
- This appliance can be used for built-in installation.
- Follow only the installation methods indicated in this manual.
- It is absolutely forbidden to use the refrigerator for purposes other than those intended.
- The appliance can be used by children of at least 8 years of age and by people with reduced physical, sensory or mental capabilities, or lack of experience or the necessary knowledge, provided they are supervised or after they have received instructions relating to safe use of the appliance and an understanding of the inherent dangers
- Children must not play with the appliance.
- Cleaning and maintenance intended to be performed by the user must not be carried out by children without supervision.

Receipt

- Check that the packaging is intact. If not, report it to the courier.
- Remove the refrigerator from the packaging, working with maximum care; in order to prevent accidental injury the use of safety gloves is advised.
- Check that the product has not been damaged.
Any damage must be reported to the reseller within 24 hours of taking delivery of the appliance.

Installation

- Before making any electrical connections, check that the main switch is off.
- Before connecting the refrigerator, check that the mains voltage corresponds to that shown on the identification plate of the appliance or that indicated on the plate located on the compressor.
- It is advisable to wait at least an hour before starting the fridge to allow the refrigerating circuit to be fully efficient.
- After installation, it is advisable to wait at least an hour before starting the refrigerator, to allow the refrigeration circuit to be fully efficient.
- The refrigerator must be positioned away from heat sources, ensuring sufficient ventilation.

Maintenance and safety

- Before performing any maintenance or cleaning operation, unplug or switch off the appliance.
- Keep ventilation openings clear of obstruction. To clean the ventilated condenser, contact qualified personnel.
- Before carrying out any maintenance or cleaning operation, disconnect the power plug.
- For any operating problems, contact the nearest Vitrifrigo assistance centre; in any case make use of qualified personnel.
- Do not store explosive substances in this appliance, such as aerosol cans with flammable propellant.
- The appliance must not be cleaned with a jet of water.
- The room in which the appliance is installed must be adequately ventilated, if possible.
- Never expose the refrigerator to jets of water or humidity.
- Do not introduce liquids in glass containers into the low temperature compartment.

Disposal

- Do not throw the packaging used for your appliance away. Separate the materials according to local waste disposal regulations.
- This product must not be disposed of with municipal waste but must be disposed of separately.

Contact your nearest Waste Electrical and Electronic Equipment (WEEE) collection centre or take it to a retailer when purchasing a new, equivalent appliance.

- The symbol to the side indicates that the refrigerator must not be disposed of as urban waste.
- Improper disposal or incorrect use of the refrigerator is subject to administrative and/or penalties imposed by current legislation.



3. PURPOSE OF THE MANUAL

This manual, referring to SLIM series refrigerators, is intended as a guide to the appliance's proper use and maintenance.

In order to learn how to operate and use the refrigerator, you must read this manual carefully.

This manual contains the operations related to: installation, operation, maintenance.

The refrigerator has been manufactured to comply with all the safety requirements given by legislation and regulations. Nevertheless, the user's utmost safety depends on carefully reading this manual and on regular and careful cleaning and maintenance.

Some information or diagrams in this manual may show details or particular aspects that might differ slightly from the refrigerator that you have purchased. The essential information, however, remains the same. Depending on the constant improvement of models, this refrigerator may show variations that are not covered in this manual. Any modifications will appear, depending on the need, in future versions of the manual.

Identification of the manufacturer

The refrigerator has been designed and manufactured exclusively by:

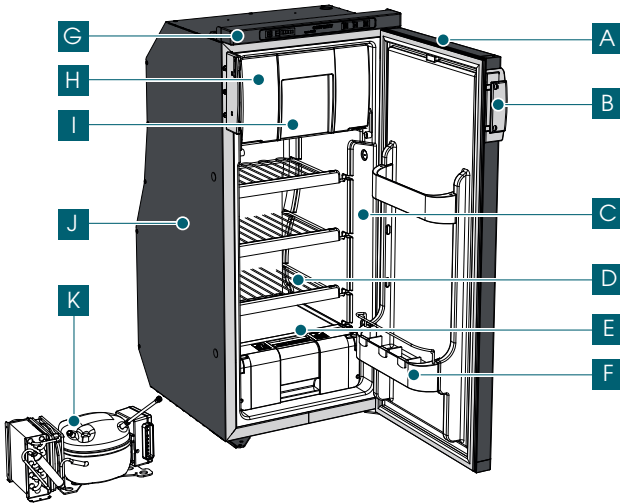
Vitrifrigo s.r.l.

Via Mazzini 75 - fraz. Montecchio - 61022 VALLEFOGLIA(PU) - Italia
tel. +39 0721 154500 - fax. +39 0721 497739
e-mail info@vitrifrigo.com - www.vitrifrigo.com

4. DESCRIPTION OF THE APPLIANCE

- The label showing the serial number and the technical data is placed inside the refrigerator. The first six digits of the serial number identify the year and the week of manufacture.
- The SLIM series, to which this manual refers, has been designed to meet the superior requirements demanded, in order to guarantee that food is properly conserved.

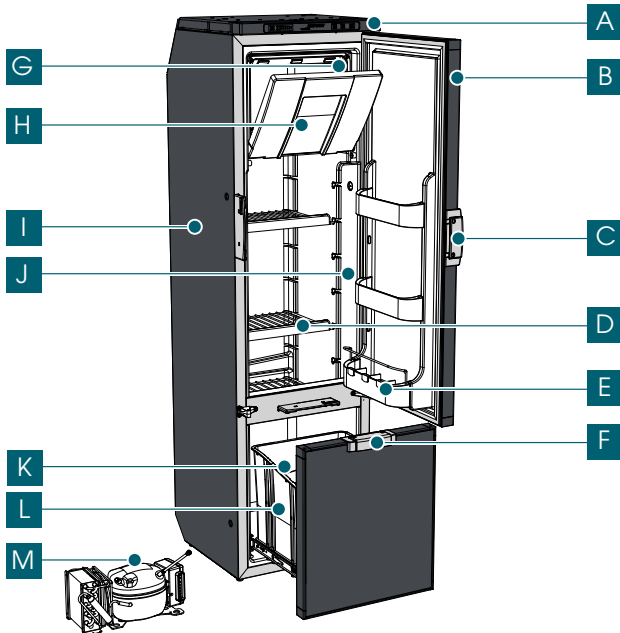
• **SLIM 90**



A) Fridge door
B) Fridge door latch
C) Fridge compartment
D) Wire shelves
E) Fruit compartment*
F) Door shelf
G) Control panel
H) Freezer compartment
I) Freezer door
J) Insulated box
K) Removable condensing unit

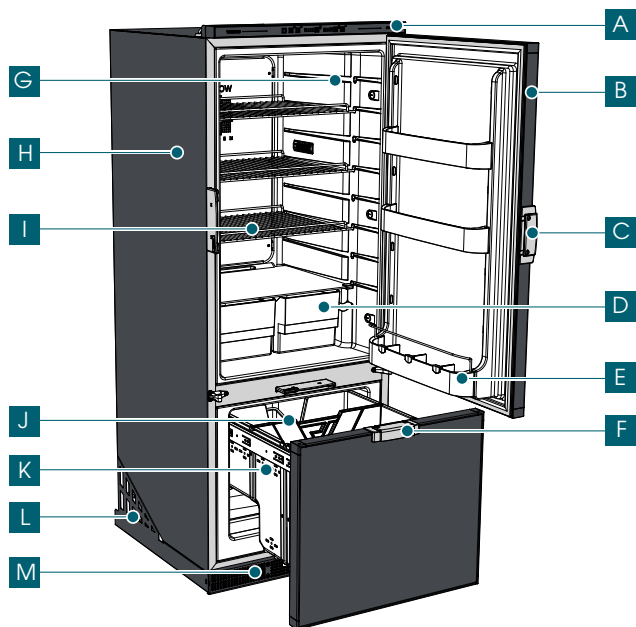
*Where there is it

• **SLIM 150**



A) Control panel
B) Fridge door
C) Fridge door latch
D) Wire shelves
E) Door shelf
F) Drawer latch
G) Freezer compartment
H) Freezer door
I) Insulated box
J) Fridge compartment
K) Bottle retainer
L) Fridge drawer
M) Removable condensing unit

• SLIM 250



A) Control Panel
B) Fridge door
C) Fridge door latch
D) Inside drawers
E) Door shelf
F) Drawer latch
G) Fridge compartment
H) Insulated box
I) Wire shelves
J) Bottle retainer
K) Fridge drawer
L) Indoor condensing unit
M) Airself vent

5. INSTALLATION

Place the fridge on a flat and stable surface. The fridge is equipped with 4 fixing points (Slim 90 e 150) or 6 fixing points (Slim 250). Before installation it is necessary to drill the insulated casing in the points indicated in (Annex 2) We recommend using 3.9x16 screws (not supplied). To access all the fixing points it is necessary to remove the drawer (slim 150). For the Slim 90 and 150 the motor/condensing unit can be positioned up to about 1.5 m from the refrigerator unit. Position the unit in such a way as to guarantee adequate ventilation and away from heat sources (Annex 3). Position the condensate drain hose to drain water out of the vehicle (only Slim 90 and Slim 150).

ATTENTION The Slim series models (Slim 90, Slim 150, and Slim 250) are built-in refrigerators only. For the corresponding built-in dimensions, please refer to the annex 1.

ATTENTION Keep the ventilation openings in the compartment where the compressor unit is housed free from obstructions.

6. DOOR INVERSION

You can reverse the door opening direction by following the steps below.

Door removal

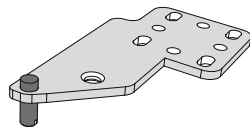
Unscrew the control panel and move it to make the hinge free to move. Then unscrew the hinge. Finally remove the door (Annex 4).

Inferior hinge removal (only Slim 90 and 150)

Remove the inferior hinge unscrewing it. The hinge may be different depending on the model.

Hinges inversion

Unscrew the pin on both hinges and reassemble them on the opposite side.



Door retainer inversion

Remove the door retainer unscrewing it and, after removing the caps, reassemble it on the opposite side. (Annex 5)

Door mounting

Secure the lower hinge (Slim 90) on the opposite side to the original one, insert the door from above into the hinge pin. Assemble the upper hinge and reposition the mask in its seat.

Door latch inversion

Remove the door latch and the cover from the door. To remove the handle, unscrew it. Reassemble them on the opposite side.



The procedure indicates the left-right inversion. Make the steps opposite to the right-left opening.

7. DOOR PANEL REPLACEMENT

Is possible replace the fridge and drawer door panels by following the instructions below. (Annex 6)

- Remove the plastic base using a screwdriver
- Remove one or both panels and replace them
- To facilitate replacement, remove the door

The panel can also be replaced with one of a different thickness. The thickness can vary from 0.8 to 3 mm.

8. ELECTRICAL CONNECTION

This installation and electrical connection must perform in accordance with the regulations by a qualified technician. The refrigerator must only be supplied at safety extra low voltage corresponding to the marking on the refrigerator.

RESPECT THE POLARITY

Section (mm ²)	Max line length 12V (m)	Max line length 24V (m)
2.5	2.5	5
4	4	8
6	6	12
10	10	20

- Cable size: Battery and electronics connection.

STANDARD BATTERY PROTECTION SETTINGS

12 V cut-out V	12 V cut-in V	24 V cut-out V	24 V cut-in V
10,4	11,7	22,8	24,2

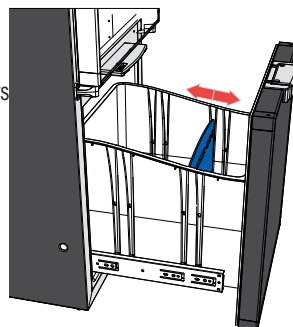
Protect the DC power line with a suitable circuit breaker with a minimum rating of 20 A. Install a 20 A fuse in the positive DC power conductor, near the positive battery terminal.

9. START-UP

At the end of the installation, check the continuity of the earth circuit and perform all electrical safety tests as provided by applicable regulations. Protect and lock cables properly to prevent accidental cable tractions that may disconnect it from the connections or that may come in contact with hot parts at temperatures above 50°C or with sharp parts. If the power cord is damaged, it must be replaced by the manufacturer or its service technician or, in any case, by a person with similar qualifications, in order to prevent any risk.

- Make sure that all packing materials have been removed.
- Test all pipes to ensure there is no leakage.
- Check all electrical connections.
- Check whether the drawer can be removed from the appliance.
- Verify that the door can be closed properly.

It's possible to manage the fridge compartment as desired by moving storage shelves and door shelves. The drawer in the models where it is provided is specially designed for bottles, cans and vegetables. To divide the drawer into compartments there is a bottle retainer that can be placed at various distances. The maximum storage capacity of the Slim 150 drawer is 20 kg, while that of the Slim 250 is 35 kg. After a minimum of 4 hours of cooling the food can be put in the refrigerator.





To prevent excessive ice formation in the refrigerator, always cover liquid products, let warm products cool down before placing them in the refrigerator. Do not open the door or drawer any longer than necessary.



To reduce the cooling time, store only pre-cooled food in the refrigerator. To prevent the food from drying out or your refrigerator from smells, store food separately in closed box.



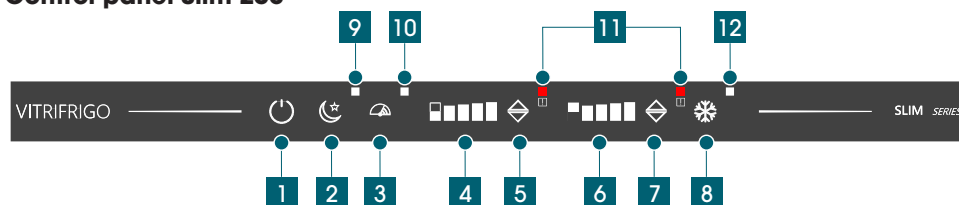
In the Slim 250 make sure not to close the air intake openings so as not to jeopardize the optimal functioning of the fridge.

Control panel Slim 90 and Slim 150



1	On / Stand by	4	Cooling level indicators
2	Night Mode	5	Cooling level buttons
3	Turbo Mode		

Control panel Slim 250



1	On / Stand by	7	Temperature regulator lower compartment
2	Night Mode	8	Switch Fridge/Freezer lower compartment
3	Turbo Mode	9	Led mode Night
4	Cooling level indicators upper compartment	10	Led mode Turbo
5	Temperature regulator upper compartment	11	Led compressor faults
6	Cooling level indicators lower compartment	12	Led lower compartment mode freezer

On / Standby

To switch on the refrigerator, push the on/off switch shown in the figure for 1 second. At this time all the functions are active.

The power source is selected automatically to the DC source.



To secure optimal performance, level your vehicle before operating the refrigerator



For optimal performances, switch on the refrigerator at least 8 hours before placing food.



We advise to clean the inside of the refrigerator properly, before using the refrigerator.

Night mode

To activate Night mode, hold down the corresponding button for one second.

The LED will light above the button and the led on the graduated scale will turn off.

During operation of this mode, it is not possible to change the cooling level.

After 10 hours of operation, Night mode will stop automatically.

The LED above the button turn off and the cooling level returns to the last set.

To turn off Night mode at any time, hold down the corresponding button for one second.

With Night mode active, the rotation speed of the compressor is the lower, in this way noise and electrical consumption are minimized.

ATTENTION **The temperatures inside the refrigerator and the refrigerator will go up by activating this mode. Only activate it when you need to save energy at night.**

Turbo mode

To turn on the Turbo mode, hold down the button for one second.

The LED will light above the button and the led on the graduated scale will turn off.

During this feature is active, it's not possible change the cooling level.

To turn off Turbo mode at any time, push the button for one second.

The LED above the button will turn off and the cooling level will return to the last set.

With Turbo mode active, the rotation speed of the compressor is the highest.

Activate it when you want to cool down the fridge as quick as possible.

As soon as the lowest temperature is reached, turbo mode turn off automatically and the cooling level returns to the last set for a specific time depending on the model.

Cooler level setting Slim 90 and 150

After switching on the refrigerator, for set the cooling level push the switches +/- . With the button indicated by the simbol "-" the set decreases to the minimum step, while whit the switch indicated by the simbol "+" you reach the maximum step.



With an ambient temperature between 15°C and 25°C, it is recommended to set the refrigerator to a cooling level 3. A higher ambient temperature requires a higher cooling level, while a lower temperature requires a lower level.

Cooler level setting Slim 250

After turning on the refrigerator, to set the cooling level, use the 5 and 7 keys belonging to the respective compartments.

The keys have a cyclical function, therefore starting from the lowest cooling level, and increasing the level, once the maximum level is reached, you will return to the first, i.e. the lowest level.

Holding down the 5 button for 3 seconds will switch off the fridge compartment; same thing with the 7 key for the lower compartment.

ATTENTION It is not possible to switch off both compartments by acting on the temperature setting buttons (5 and 7), but it can be done by acting on the On/Standby button

Ventilation Position

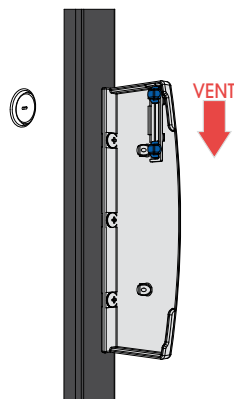
If you are not going to use the refrigerator for a long time, it is important to empty it, defrost it, and clean it completely.

To prevent bad smells and mold in the fridge, keep the fridge door in ventilation mode during this period.

Open the door and move the ventilation slider pin to the opposite side until it matches up with the retainer pin.

For positioning the door in ventilation position, open it in a controlled manner until it matches the ventilation slider pin.

Function also present in the drawer compartment in the Slim 150 and Slim 250.



Fruit and vegetables compartment

In the models where it is provided, the refrigerator is equipped with a fruit holder compartment.

Depending on the food to be stored, it is possible to select different positions in order to ensure different levels of humidity inside the fruit compartment. (Annex 7)

With the fruit bowl closed, a higher degree of humidity is obtained.

This condition is ideal for fruit and vegetables.

With an open fruit compartment, a drier environment is obtained, ideal for storing fruit. It is recommended to use this mode even when the compartment is full.

Defrosting Slim 90 and 150

An ice layer inside the fridge reduces the cooling capacity of the fridge. You must periodically defrost your fridge.

The SLIM series refrigerators are equipped with an automatic defrosting system, set by the manufacturer.

Anyway, in case of high frost build up, a manual defrost is required. First turn off the refrigerator, after emptying it.

Open the fridge door to speed up the defrosting process.

The fridge compartment is equipped with a condensate collection system, the freezer compartment is not equipped with any system of water draining, therefore, place dry towels inside the freezer cell, especially at the front to prevent thawing water falling into the fridge.

When the fridge is defrosted, thoroughly dry the interior.

ATTENTION Do not speed up the defrosting process by removing the ice sheet with force, with sharp objects or using a hair dryer.

Defrosting Slim 250

Defrosting the drawer compartment, when switching from the freezer function to the fridge function, must be carried out manually, through these phases:

- Remove the food from the drawer compartment
- Turn off the drawer compartment.
- Remove the drawer (Annex 8)
- Wait for the ice to melt completely.
- Dry all water with a cloth.

LED board replacement

To remove the control panel LED board (all models) follow these steps:

- Remove the adhesive label.
- Unscrew the front screws.
- Removing the mask by detaching the connector.
- Undo the board fastening screws.
- LED board replacement.

Drawer removal (Slim 150 and 250)

To extract the drawers from the sliding guides it is necessary to apply pressure on the two levers, both right and left, present in the guides. See Annex 8.

10. MAINTENANCE

Cleaning

It is important regularly clean the refrigerator for optimum performance. Remove the shelves and drawer. Use a soft damp cloth for the outside of the fridge. Use a soft cloth and a neutral detergent for domestic use.

ATTENTION Do not clean the fridge with soap or with aggressive or caustic chemicals. Do not wash any refrigerator component in the dishwasher.

Unused For Long Periods

If you are not going to use the refrigerator for a long time, it is important to empty it, defrost it, and clean it completely. To prevent bad smells and mold in the fridge, keep the fridge door and the drawer compartment in ventilation mode during storage.

Disposal

The fridge is designed and manufactured with high quality materials and components that can be recycled and reused.

At the end of the refrigerator life cycle dispose of the product according to national regulations. Do not dispose the refrigerator with normal domestic waste.

Proper disposal of the product helps to prevent potential negative consequences for the environment and human health.

11. WHAT TO DO IF THE REFRIGERATOR DOES NOT WORK

Problem	Possible cause(s)	Solution
The fridge It will not start	Power failure	Check that the power cord is intact and connected correctly.
		DC mode: check that the battery is charged
		Verificare che la tensione sulla morsettiera del dispositivo elettronico dell'apparecchio sia uguale a quella della batteria.
	Make a reset	Check that the voltage on the terminal block of the device electronics of the appliance is the same as that of the battery.
	Thermostat in STANDBY	Turn ON from the control panel
The fridge does not cool	Resa insufficiente	Check that: (a) the door closes hermetically, (b) the fridge is not near heat sources and is sufficiently ventilated, (c) the condenser is not clogged with dust

The refrigerator does not stop	Internal temperature too high	Check that the door is closed perfectly
The courtesy light does not turn on	The light is out of order	Call for assistance
Noisy refrigerator		Check that the refrigerator is placed on level ground and is not in direct contact with objects that can cause vibrations

12. ALLARMS

Alarm display	Error	Possible cause(s)	Consequences	Solution
Intermittent beep	Probe	Faulty probe and/or probe not connected	The refrigerator does not work	It is advisable to remove the food, turn off the refrigerator and call for assistance immediately
Intermittent beep	Open door	The alarm is activated after the door has been left open for 1 minute	Refrigerator malfunction	Check door closing
Flashing alarm LED	Count number of flashes			Contact to assistance immediately