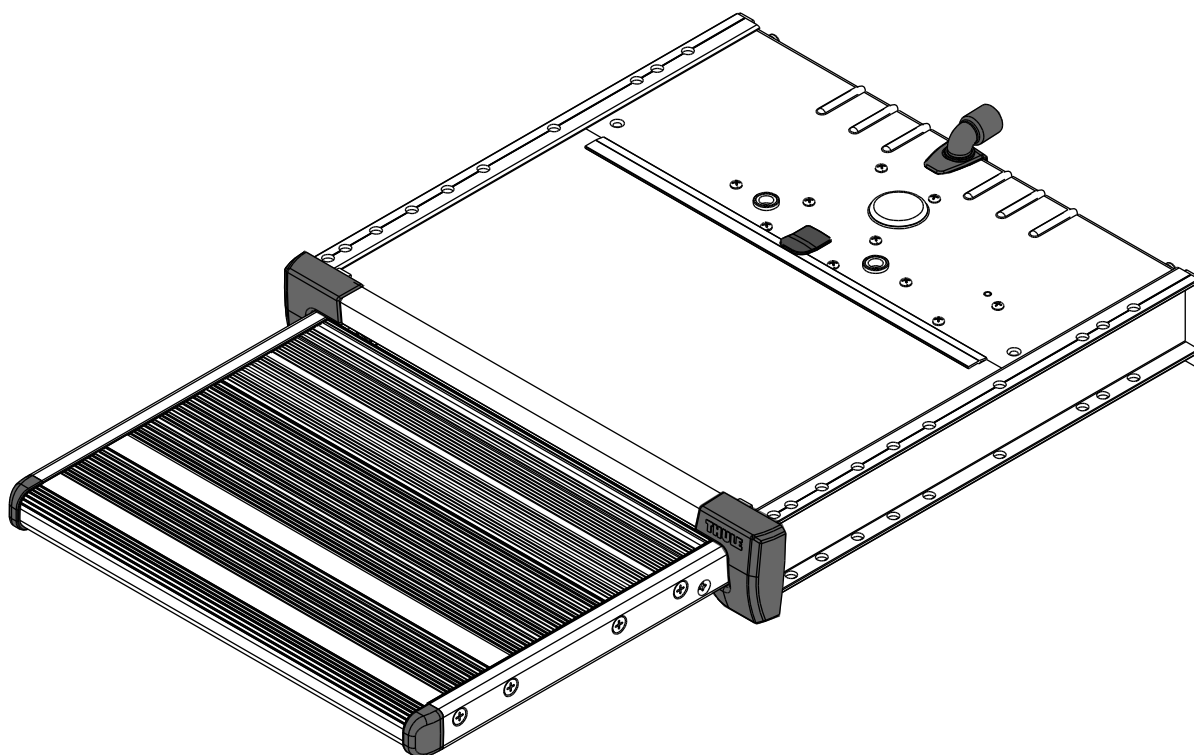
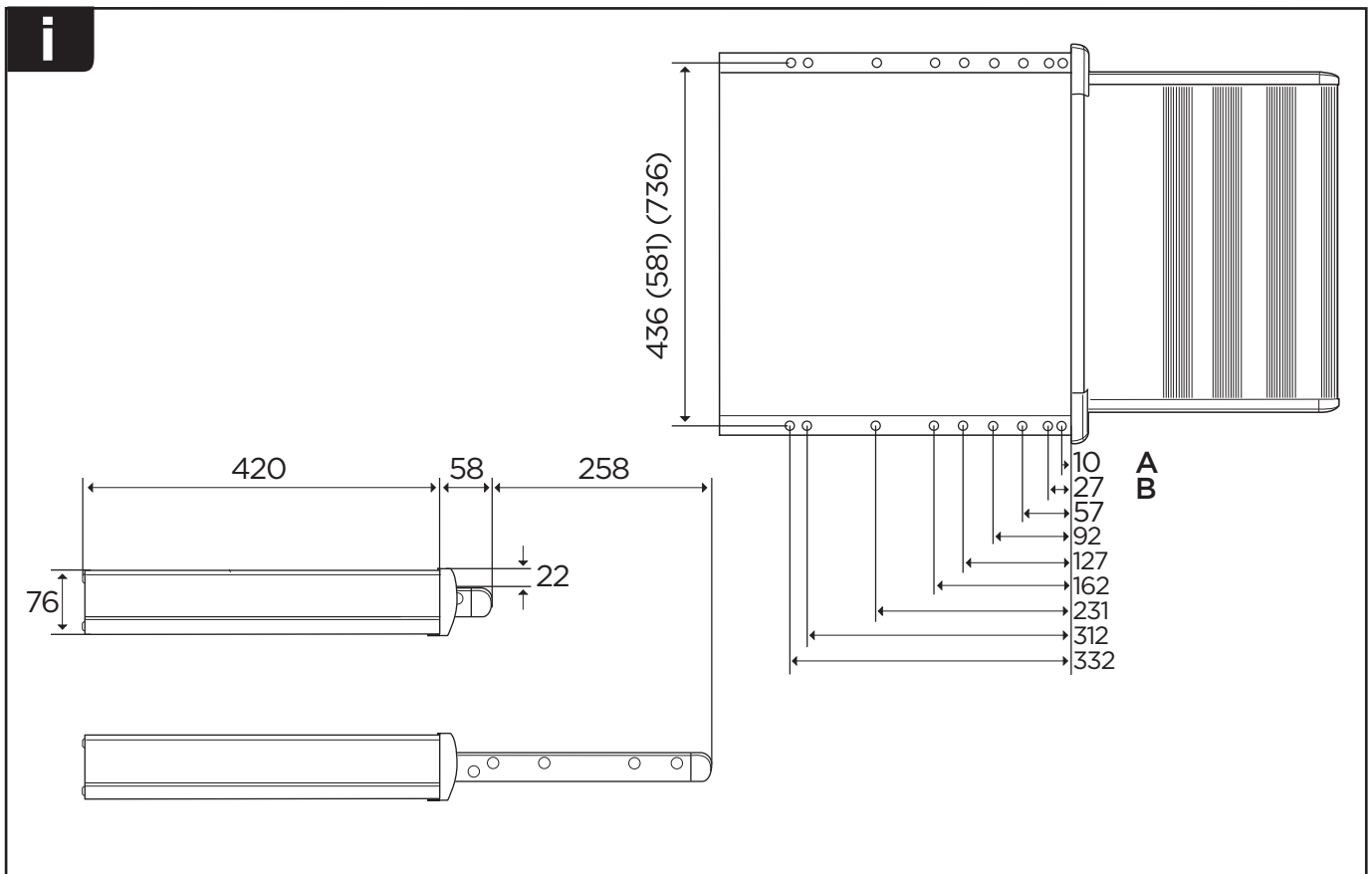
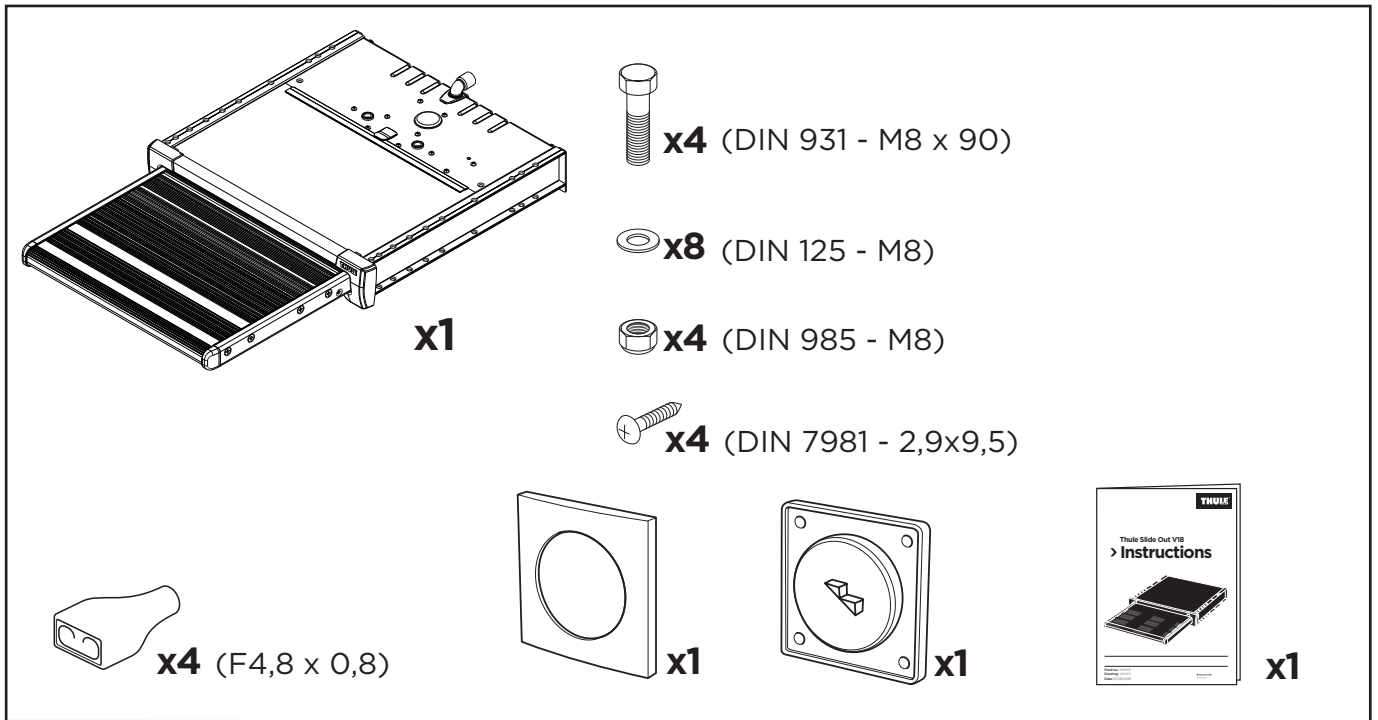
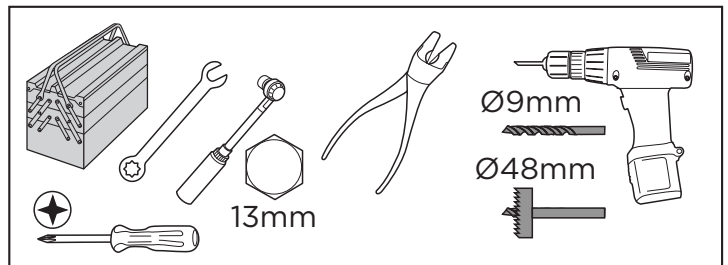
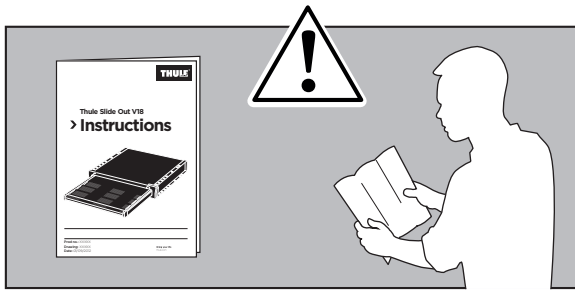


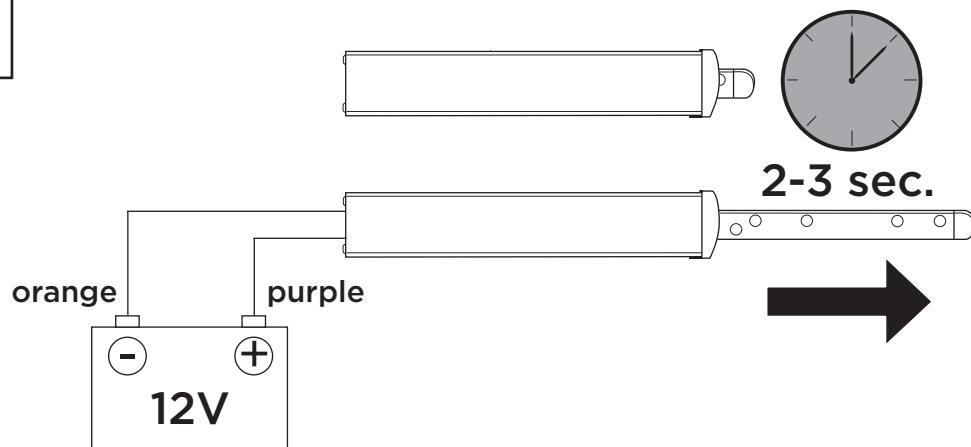
Thule Slide-Out Step V18 12V

> Installation

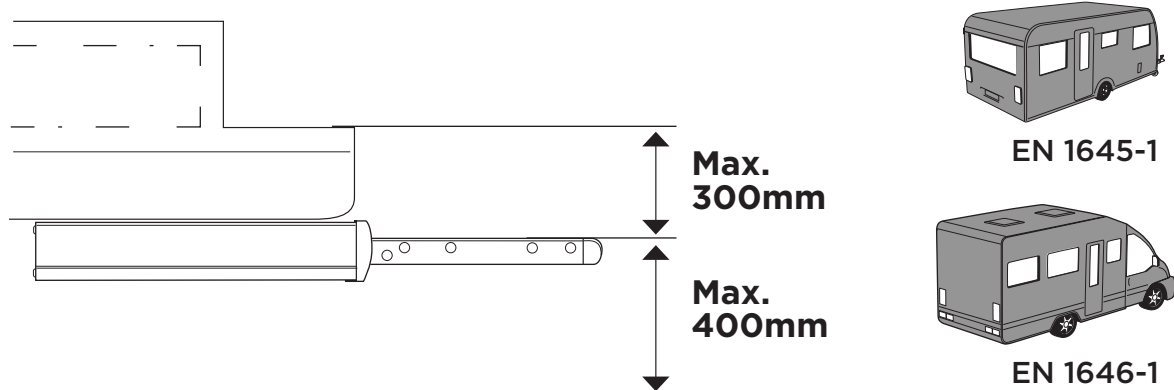




1

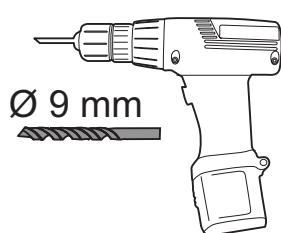


2

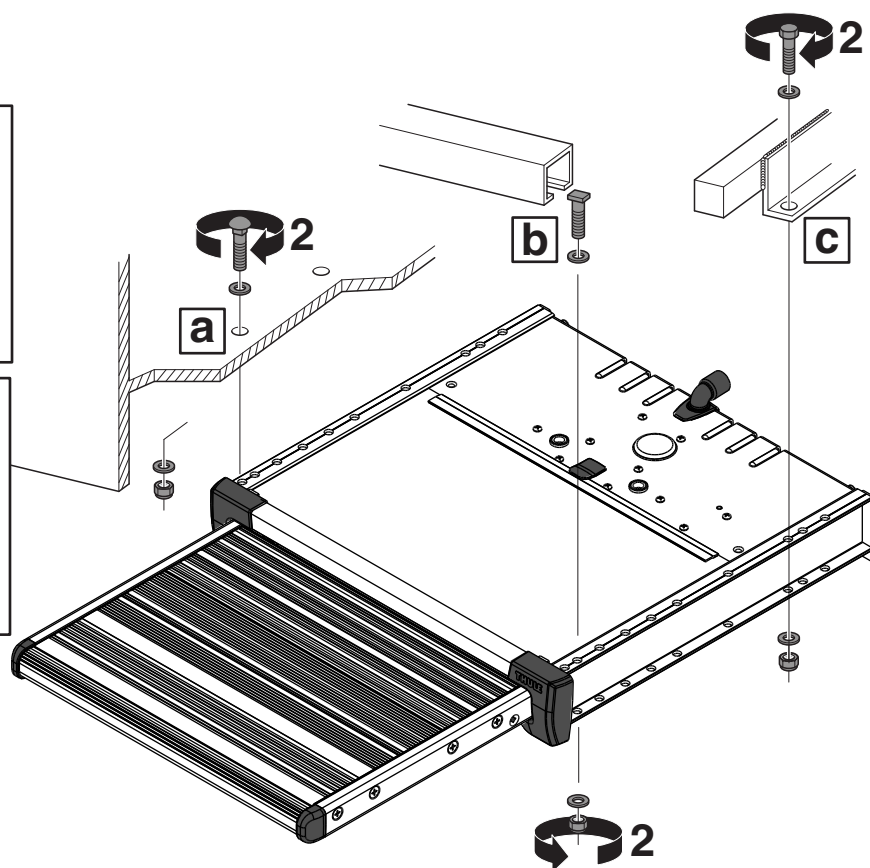
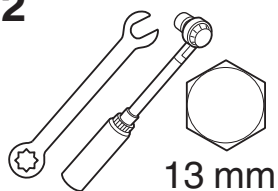


3

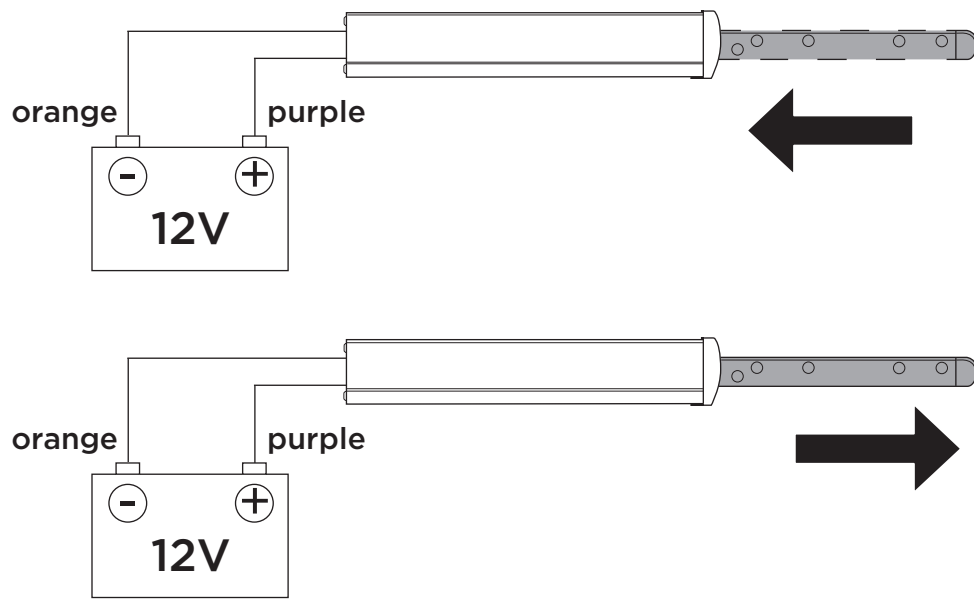
1



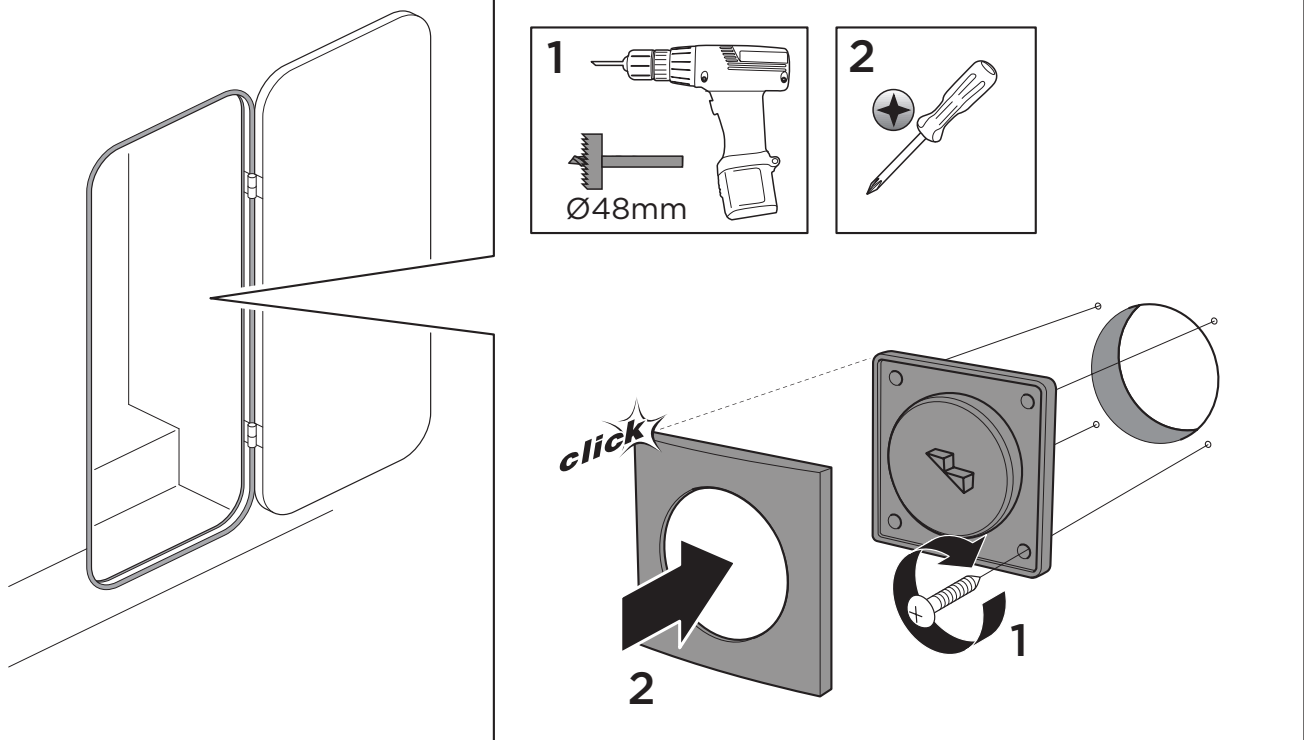
2



4

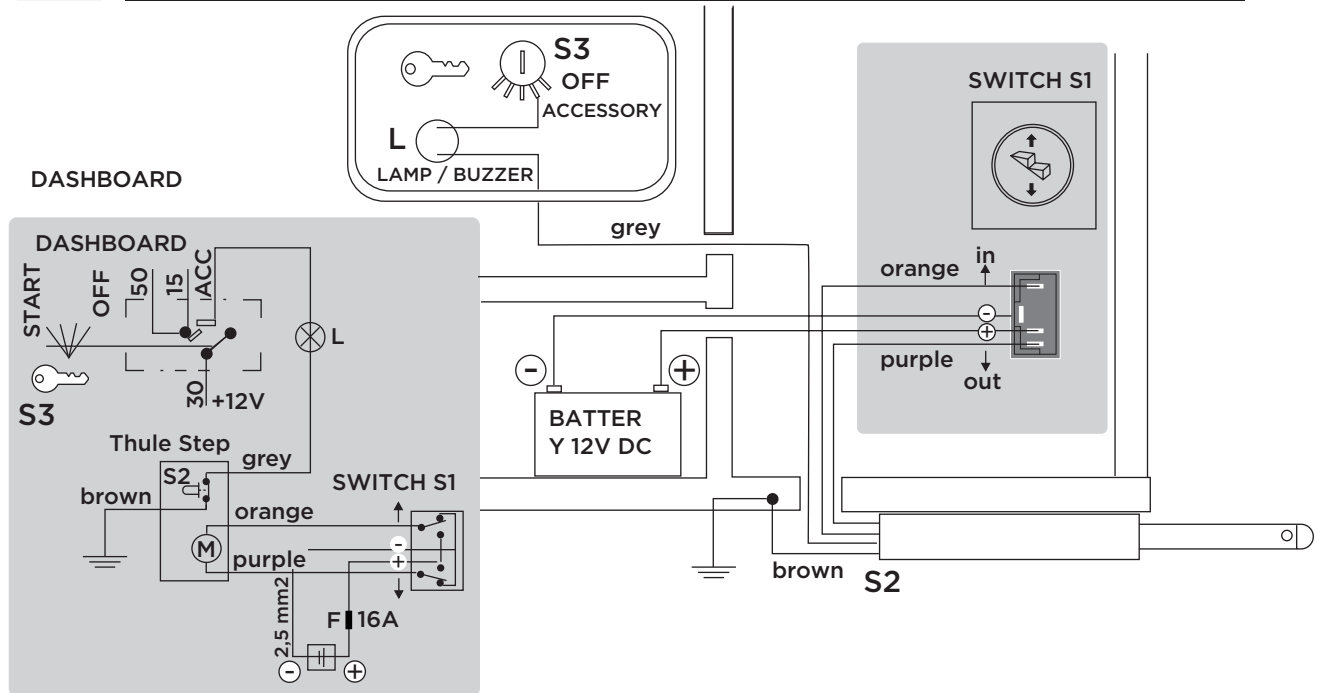


5



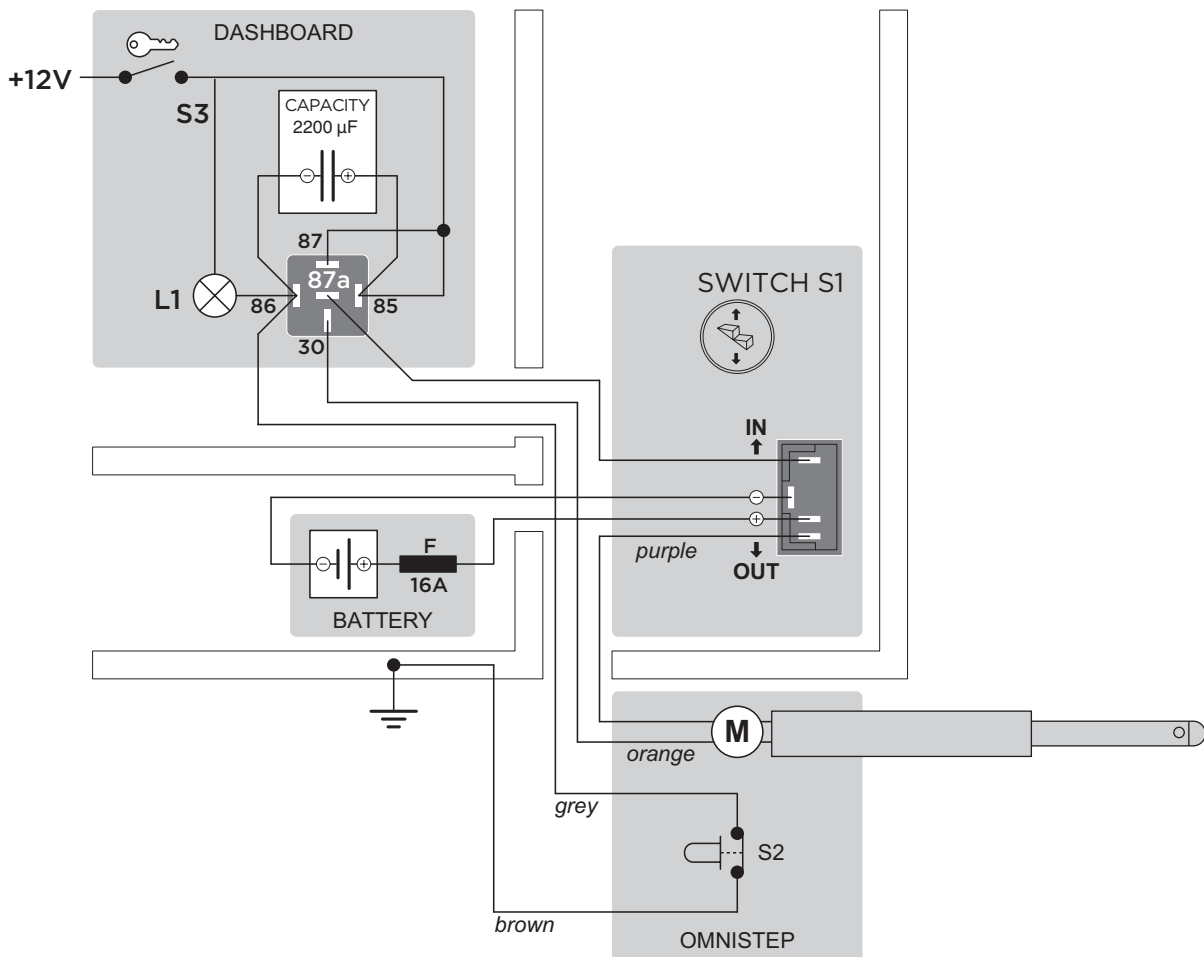
6

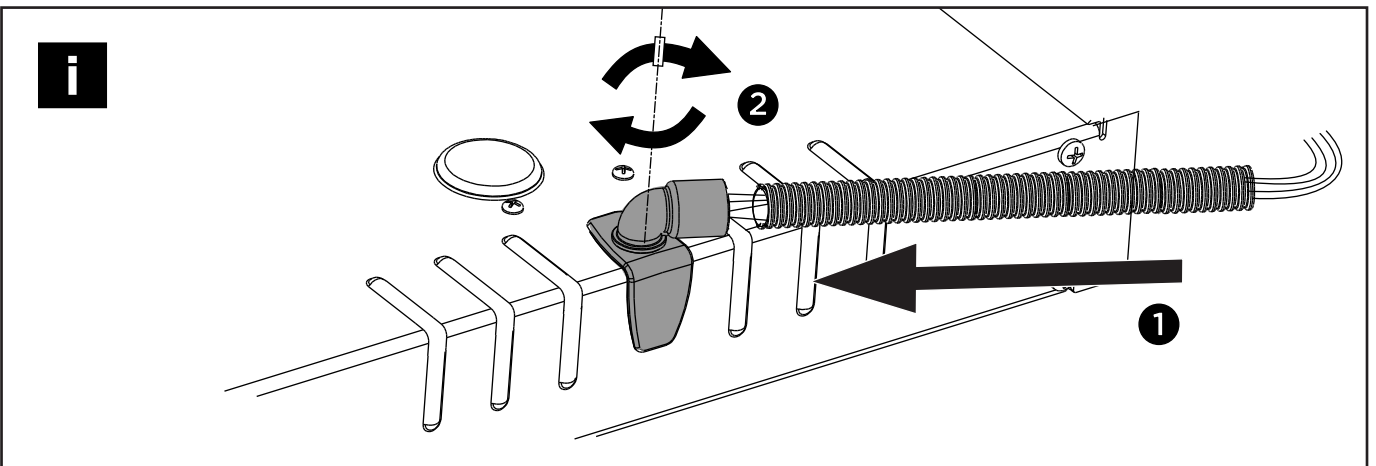
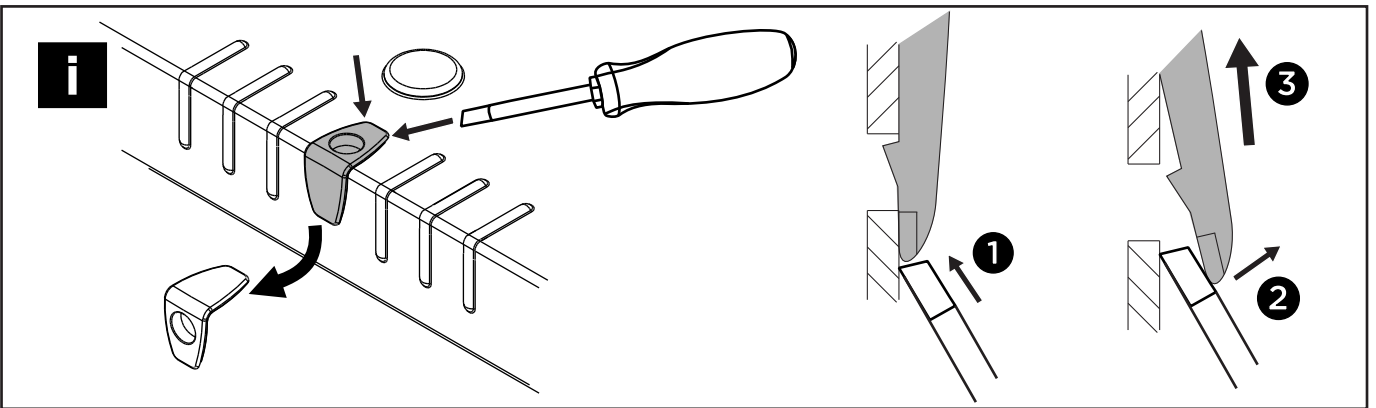
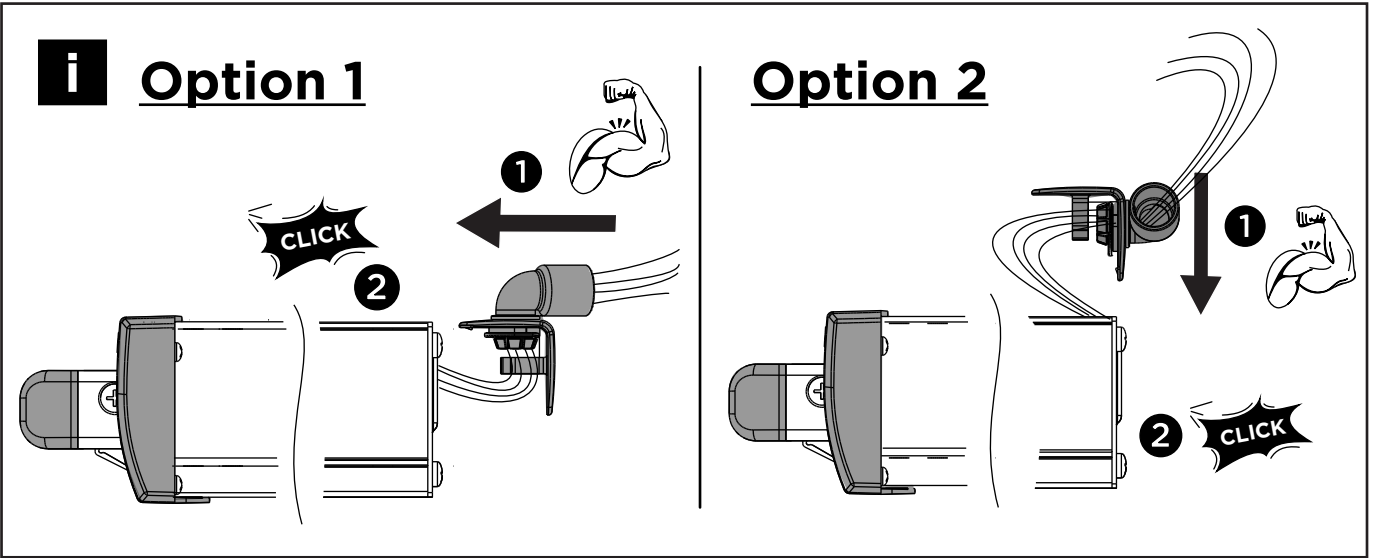
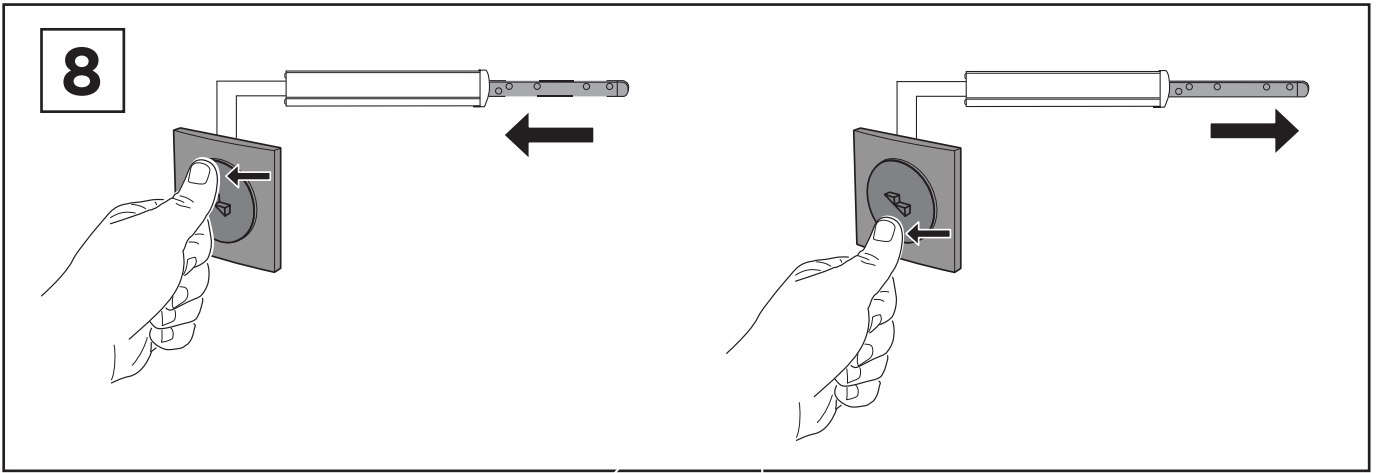
THULE STEP with WARNING LAMP (or BUZZER)



7

THULE STEP with OPTIONAL RELAY (308200) for AUTOMATIC RETRACTION





EN INSTRUCTIONS

Read this installation instruction and the safety instructions in appendix thoroughly.
No guarantee will be allowed for damages caused by wrong installation or operation.

Follow the wiring diagram for all electrical installation!

1 - Extend the step

Connect the Thule Step motor to a 12V DC Battery. Place the purple wire on the positive pole and the orange wire on the negative pole.

Cut the connection when the step is fully extended.

Warning: Do not keep the Thule Step motor under tension for more than 2-3 seconds!

2 - Requirements

In order to meet the EN 1646-1 (motor homes) and EN 1645-1 (caravans) requirements, the step should not be more than 400 mm from the ground and should be 300 mm at the most from the next step, when extended.

3 - Installation of the Thule Step

These installation instructions are suggestions only. Depending on the vehicle type, the installation requirements may vary:

- a. Right through the vehicle bottom.
 - b. In rails incorporated in the chassis.
 - c. On a special construction welded or bolted to the chassis.
- Contact your local dealer or manufacturer before drilling, to make sure that there are no obstacles at the inside (for example electric cables, gas pipes and so on).
 - Drill four 9 mm holes according to the coordinates shown in the dimensions drawing. Use hole A or B on both sides. Keep in mind that when retracted, the footboard is 60 mm outside the frame.
 - Ensure that the installation is made so that there is no clamping danger (fingers, toes etc.) when the step is extended or retracted.
 - Install the Thule Step in a dismountable way.

4 - Check the operation of the step

- Place the purple wire on the negative pole and the orange wire on the positive pole of the battery for the step to retract.
- Place the purple wire on the positive pole and the orange wire on the negative pole of the battery for the step to extend.

5 - Install the operating switch (S1)

Install the switch near the door for easy access. Drill a 48 mm hole in the closet wall (most common). Mount the switch with four screws and "click" the cover plate in place.

6 - Standard installation

- Place two 2,5 mm 2 wires from the battery to the switch (S1) via a 16A fuse in the positive conduction. In order to prevent short circuit, do not insert the fuse in the fuse holder until all the electrical connections are completed.
- Place the purple and the orange wire from the Thule Step motor to the switch (S1).
- Provide the wires for the switch (S1) with flat connectors 4,8 F and connect them.
- A switch (S2), which is pushed in when the step is retracted, is incorporated in the Thule Step. A warning light (L) that is turned on if the step is not fully retracted and the engine is running, must be connected to this switch (S2). Connect the accessories clamp, position 1 of the ignition key (S3), via the warning light (L) to the grey switch wire. Connect the brown switch wire to the negative pole of the same battery as the positive current is taken from.
- Complete the electrical connections and insert the 16 A fuse in the fuseholder and the Thule Step is now ready to use.

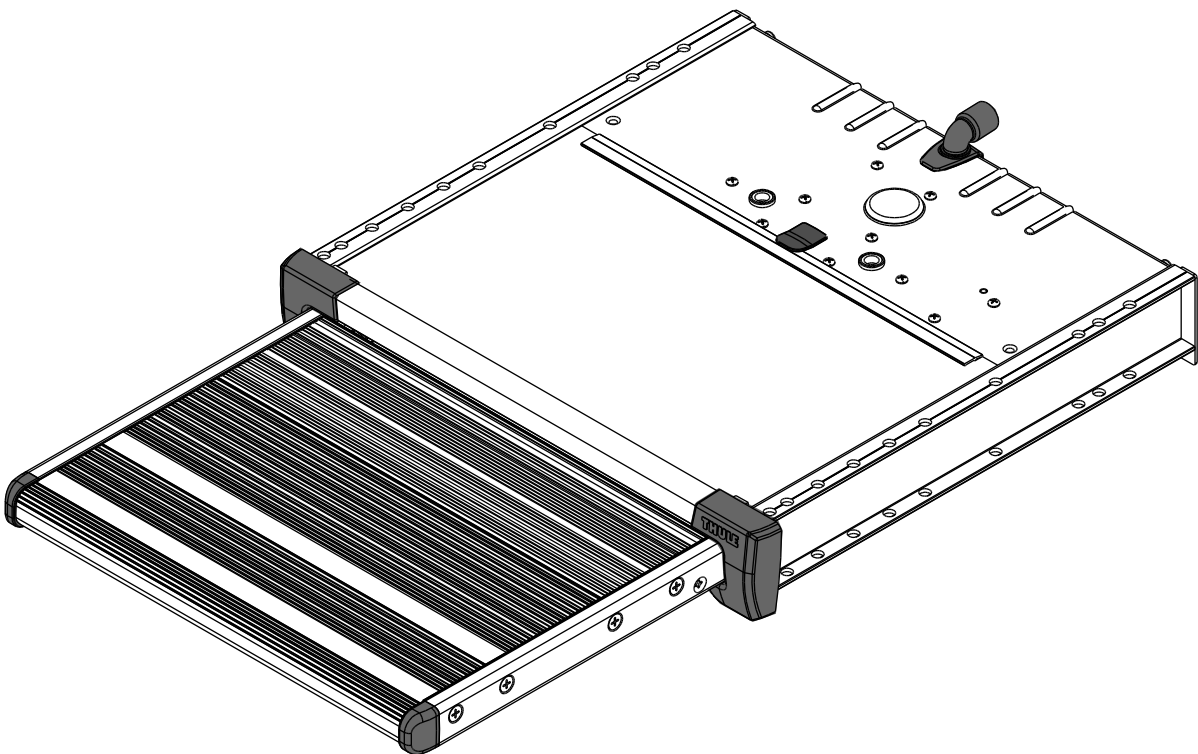
7 - Installation with auxiliary relay for automatic retraction

In order to meet the EMC standards 2004/108/EC, an auxiliary relay that prevents operation of the Thule Step and keeps it retracted whilst driving is installed.

- Place two 2,5 mm 2 wires from the battery to the switch (S1) via a 16A fuse in the positive conduction. In order to prevent short circuit, do not insert the fuse in the fuse holder until all the electrical connections are completed.
- Mount the relay at a suitable place.
- Place the purple wire from the Thule Step motor to the switch (S1) and the orange wire to the relay.
- Provide the wires for the switch (S1) with flat connectors 4,8 F and the wires for the relay with flat connectors 6,3 F and connect them.
- A switch (S2), which is pushed in when the step is retracted, is incorporated in the Thule Step. A warning light (L) that is turned on if the step is not fully retracted and the engine is running, must be connected to this switch (S2). Connect the accessories clamp, position 1 of the ignition key (S3), via the warning light (L) to the grey switch wire. Connect the brown switch wire to the negative pole of the same battery as the positive current is taken from.
- Connect an electrolytic capacitor of 2200 µF 16VDC to the relay.
- The capacitor makes the step retract to its endstop after the power has been cut by the Thule Step switch (S2).
- Complete the electrical connections and insert the 16 A fuse in the fuseholder and the Thule Step is now ready to use.

Thule Slide-Out Step V18 12V

› Instructions



EN INSTRUCTIONS

Read this installation instruction and the safety instructions in appendix thoroughly.
No guarantee will be allowed for damages caused by wrong installation or operation.

1 - Operation

- The Thule Step is operated by the lever switch.
- Maximum static load is 200 kg.
- Note: Hold the switch until the step is fully extended.
- Never use the step when retracted or not fully extended, or the blocking will not work and the motor can be damaged.
- Always check that the step is fully retracted before departure!

2 - Maintenance

Dirt and frost can prevent the Thule Step from operating properly. In this case the moving parts should be cleaned or defrosted. Keep the footboard clean and check the operation of the switch regularly.

It's possible to take out the footboard in order to clean the step inside.

Retract the footboard by the lever switch, when possible not fully. Disconnect the power to the step.

Disconnect the 2 drive rods from the footboard by removing the clips at the bottomside of the foot-board.

Take away the 2 black stops with the screws at the outside.

Take out the footboard and clean.

Brush the inside of the step and remove the dirt with a vacuum cleaner. Never use a high pressure cleaner or water.

First reconnect the driving rods. Followed by fixing the endstops.

3 - In case of electrical failure

If the step does not retract by motor: it's possible to take out the footboard: see maintenance.

Note: Never retract or extend the step by hand without this mechanical disconnection.

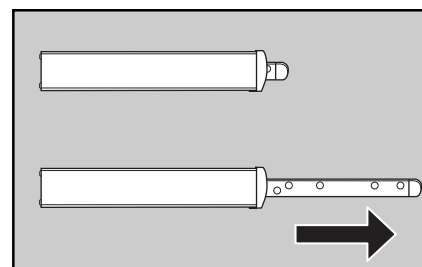
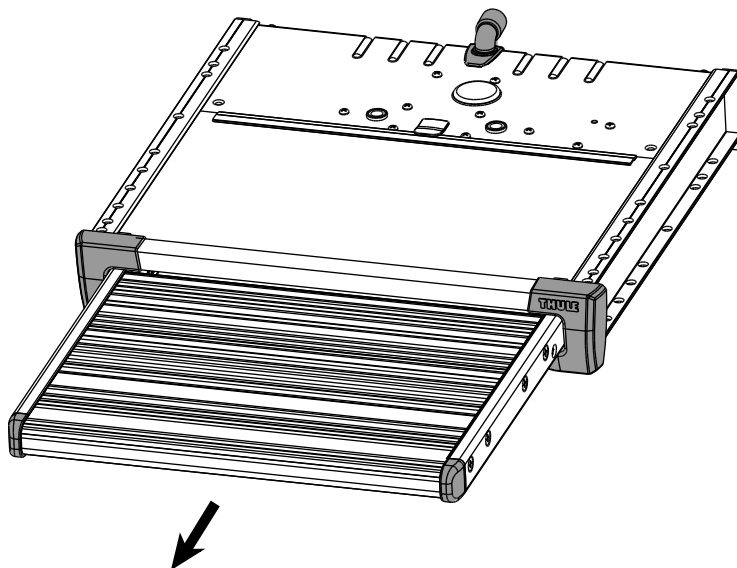
4 - Current drawn

The Thule Step motor uses 2A during operation.

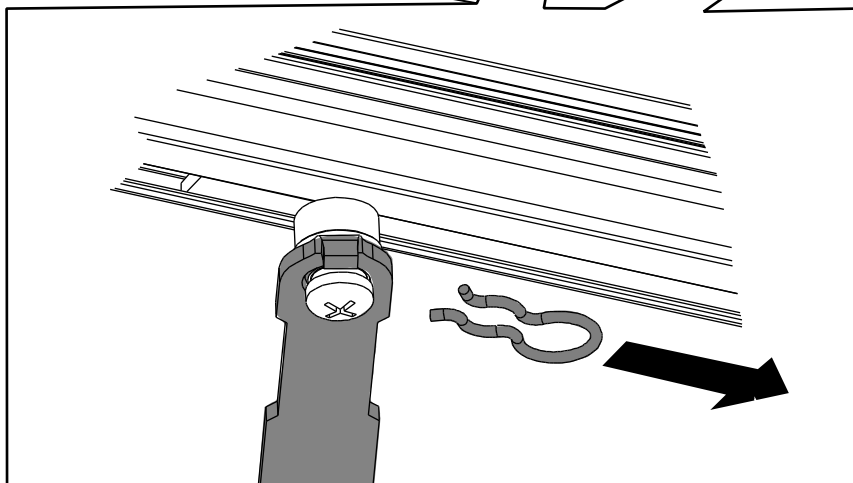
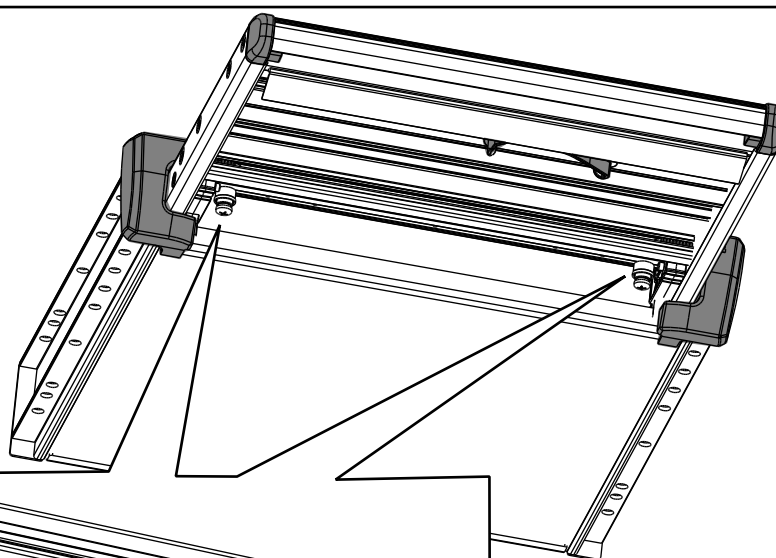
Note: If the switch is kept pushed when fully extended or retracted, it uses 9A.

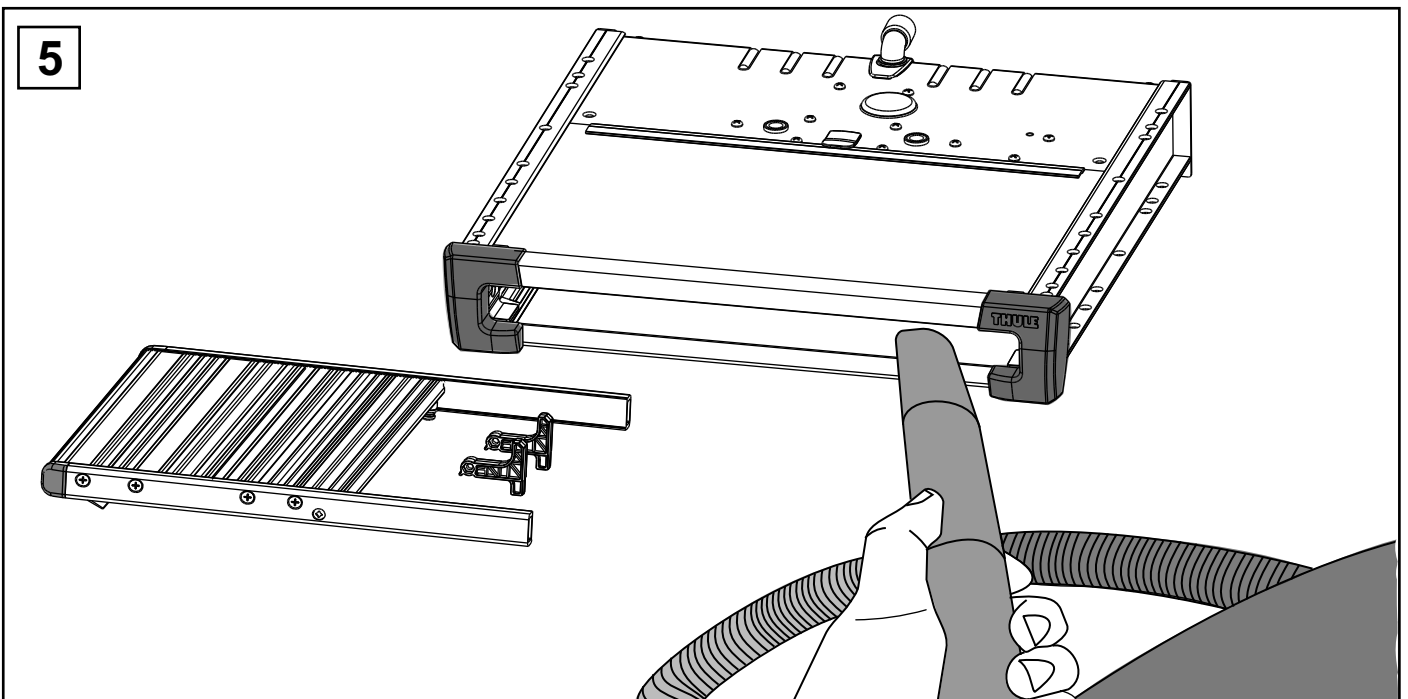
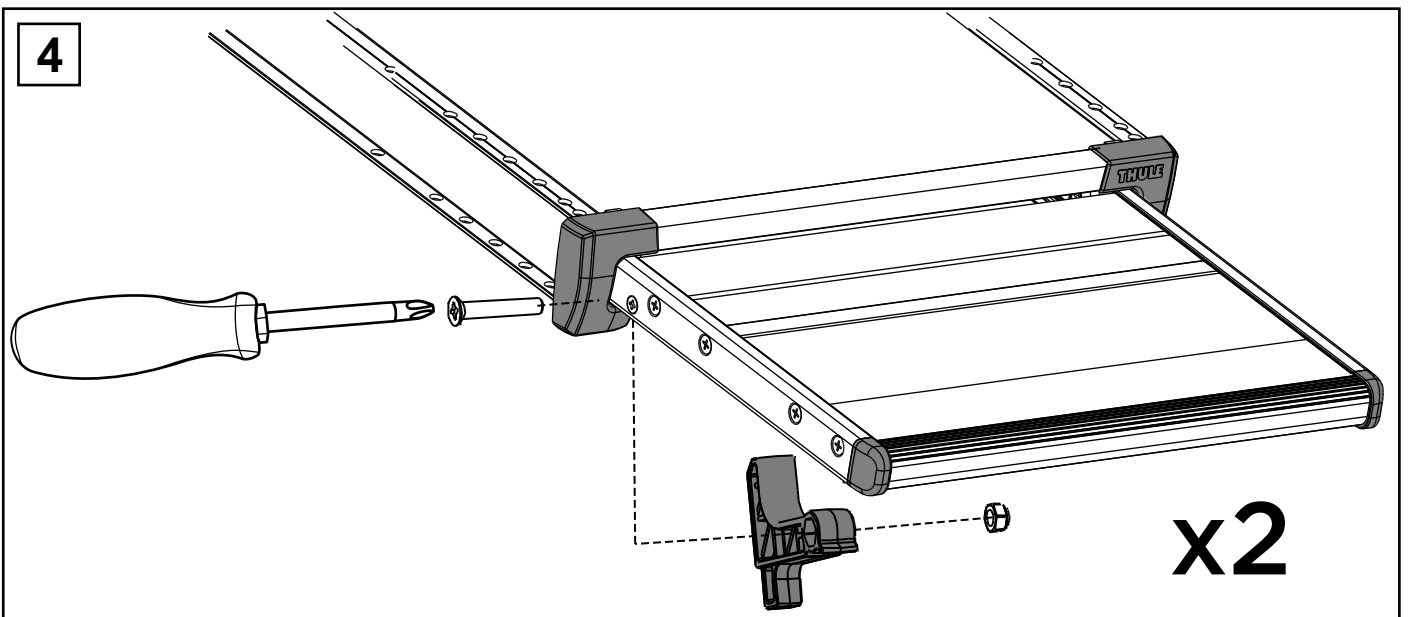
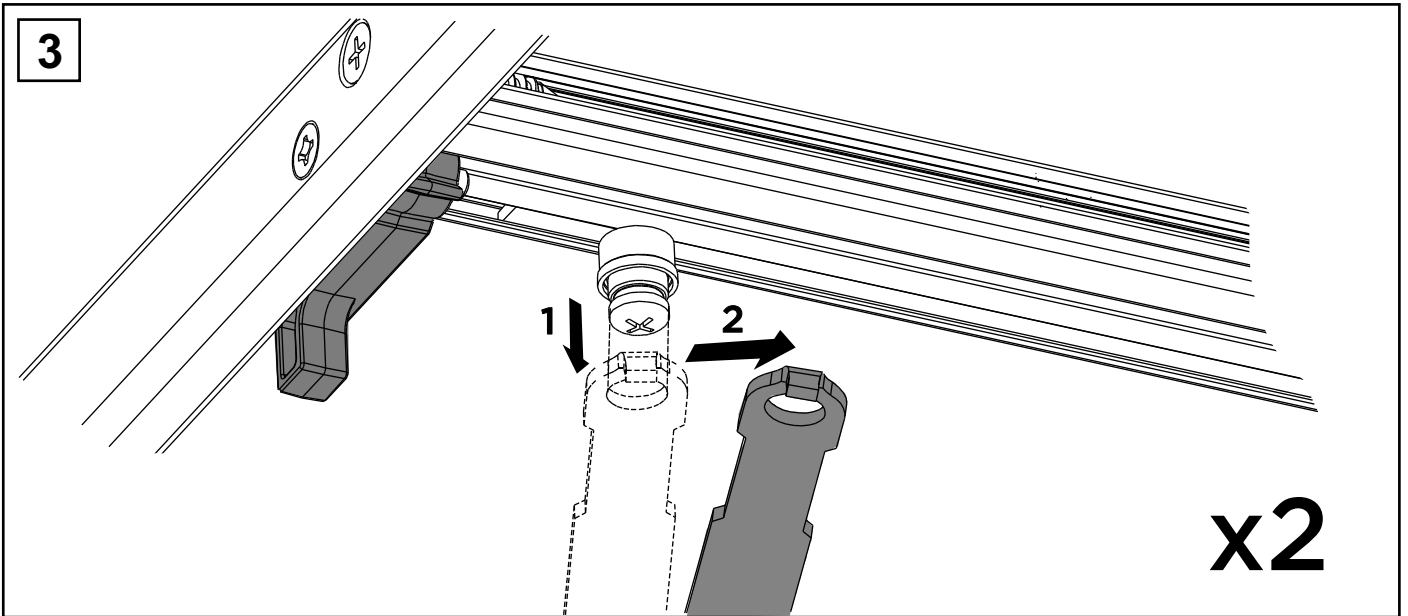
MAINTENANCE

1



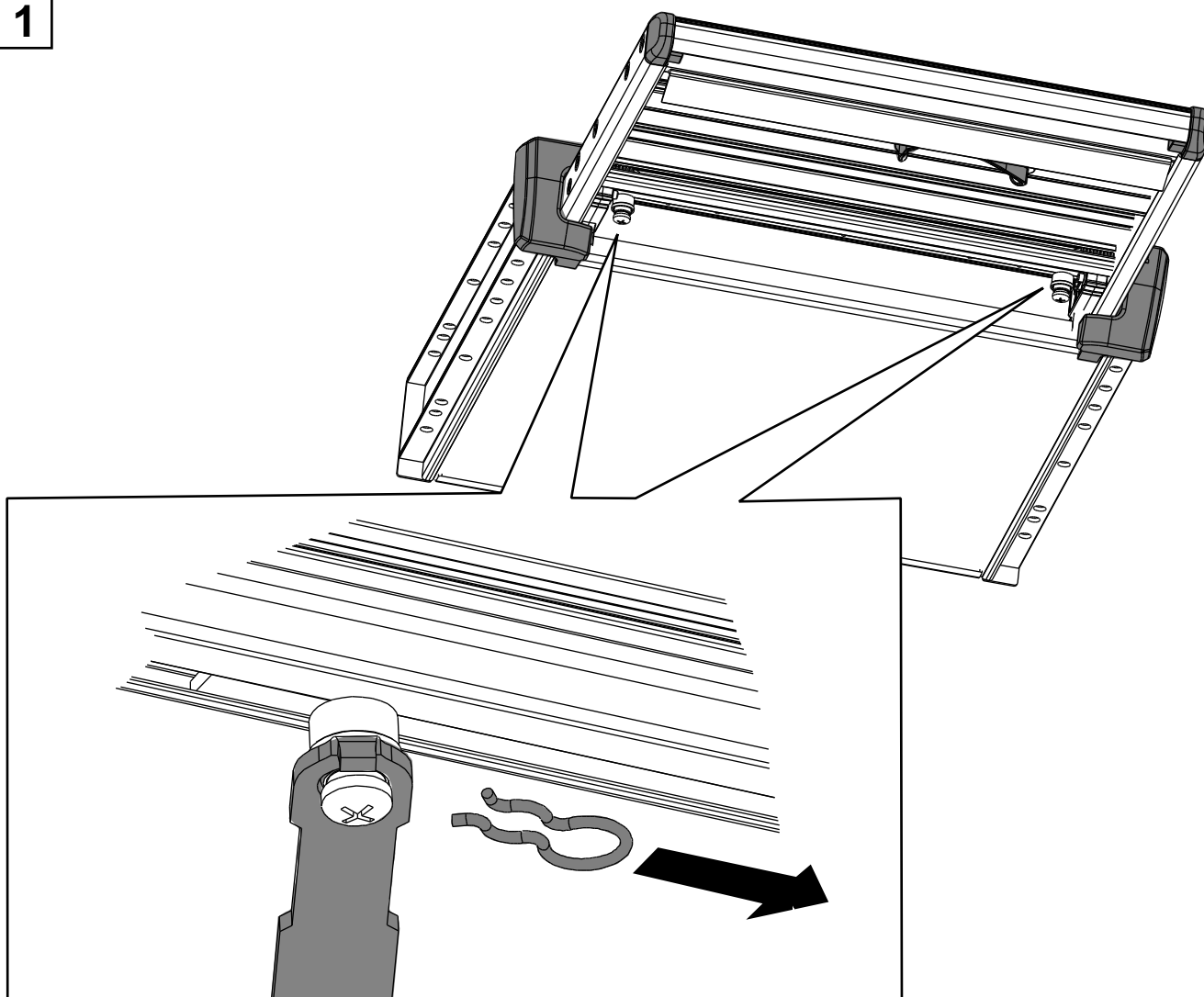
2



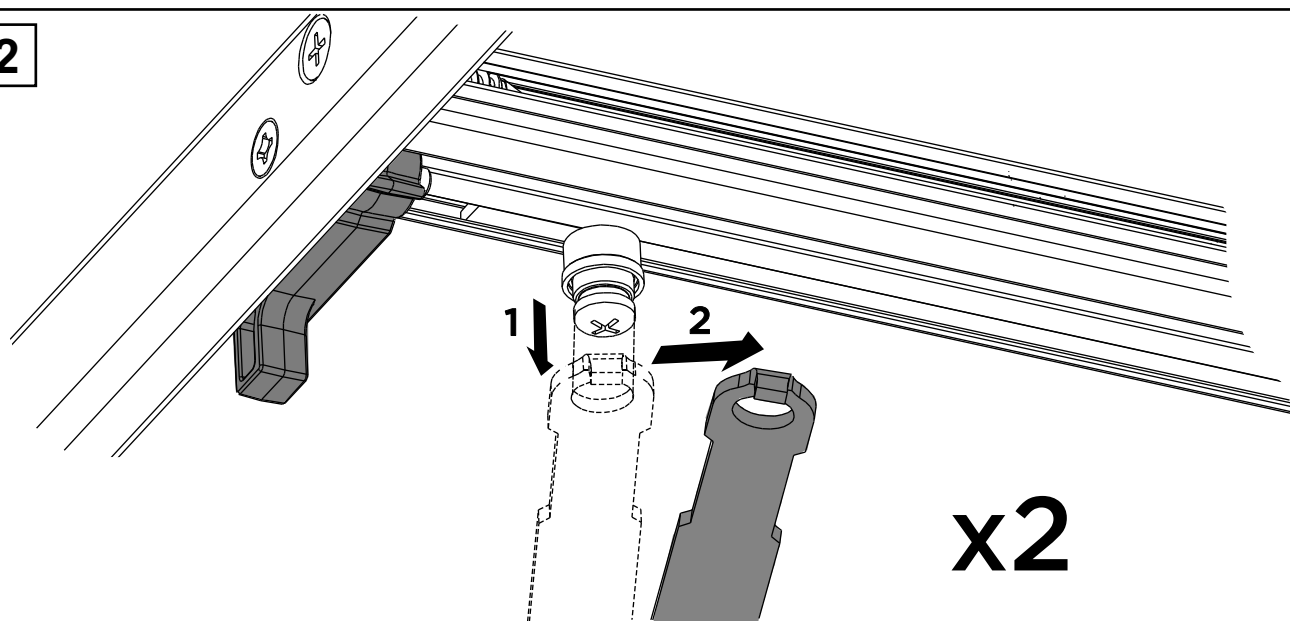


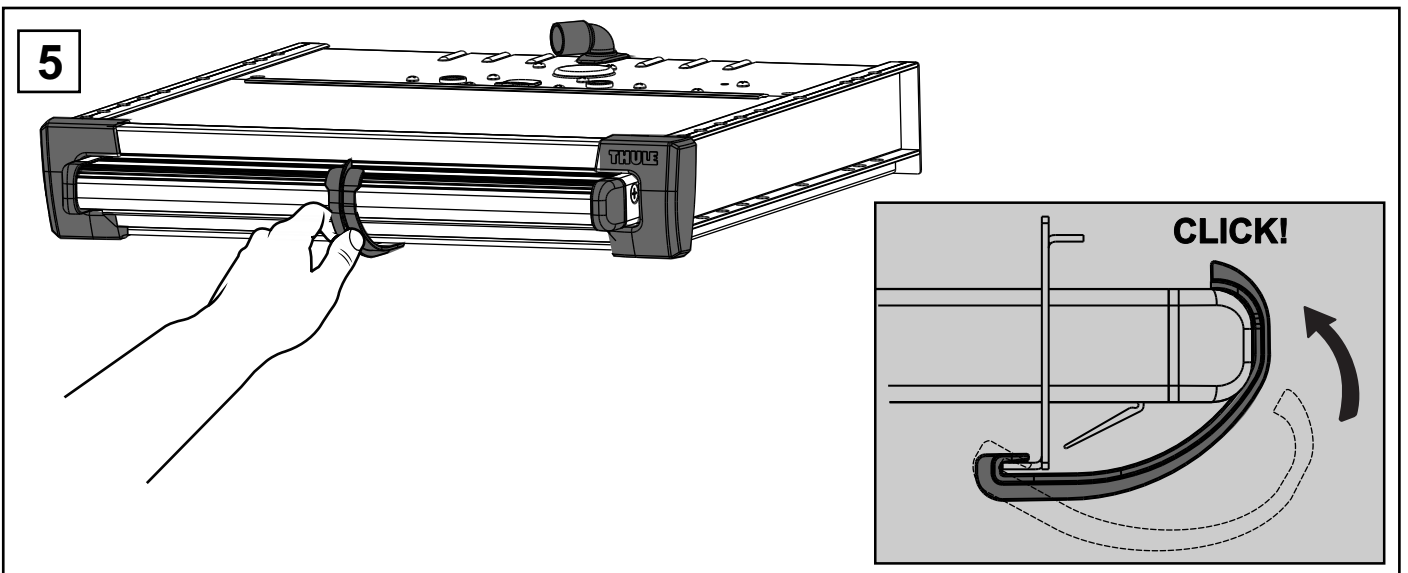
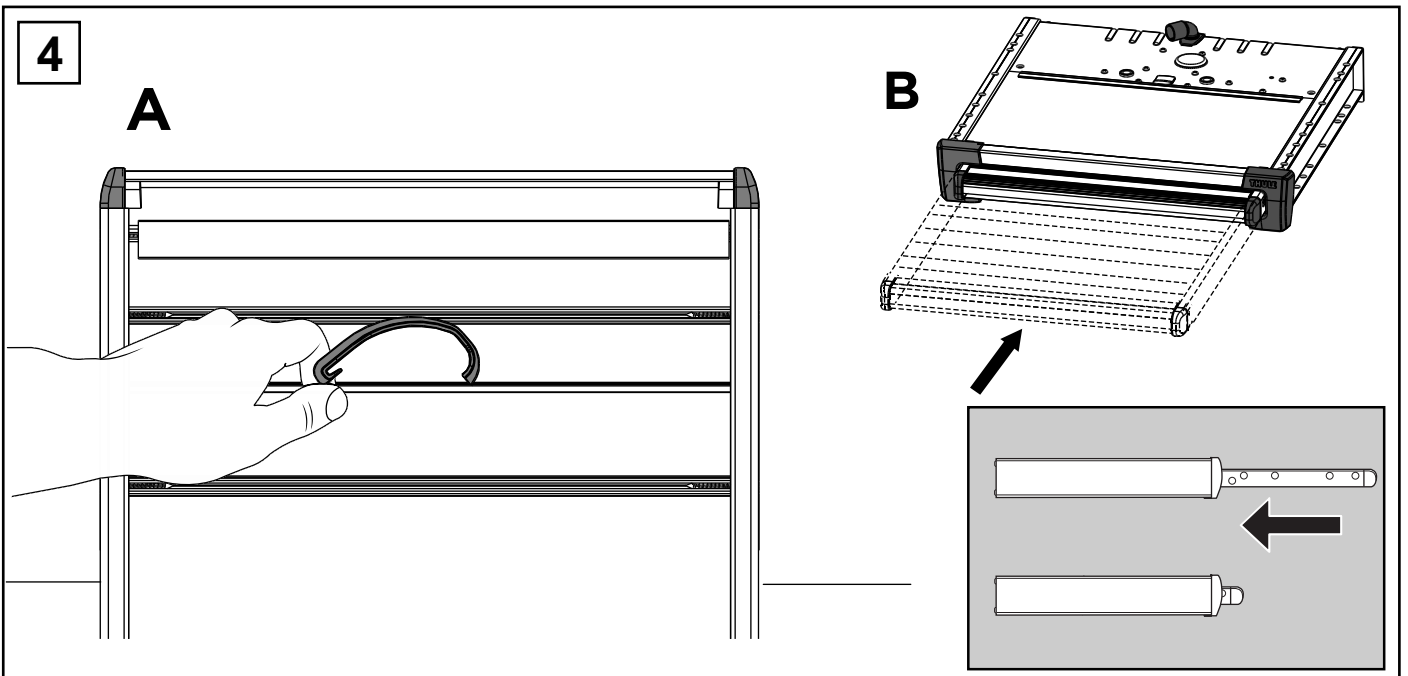
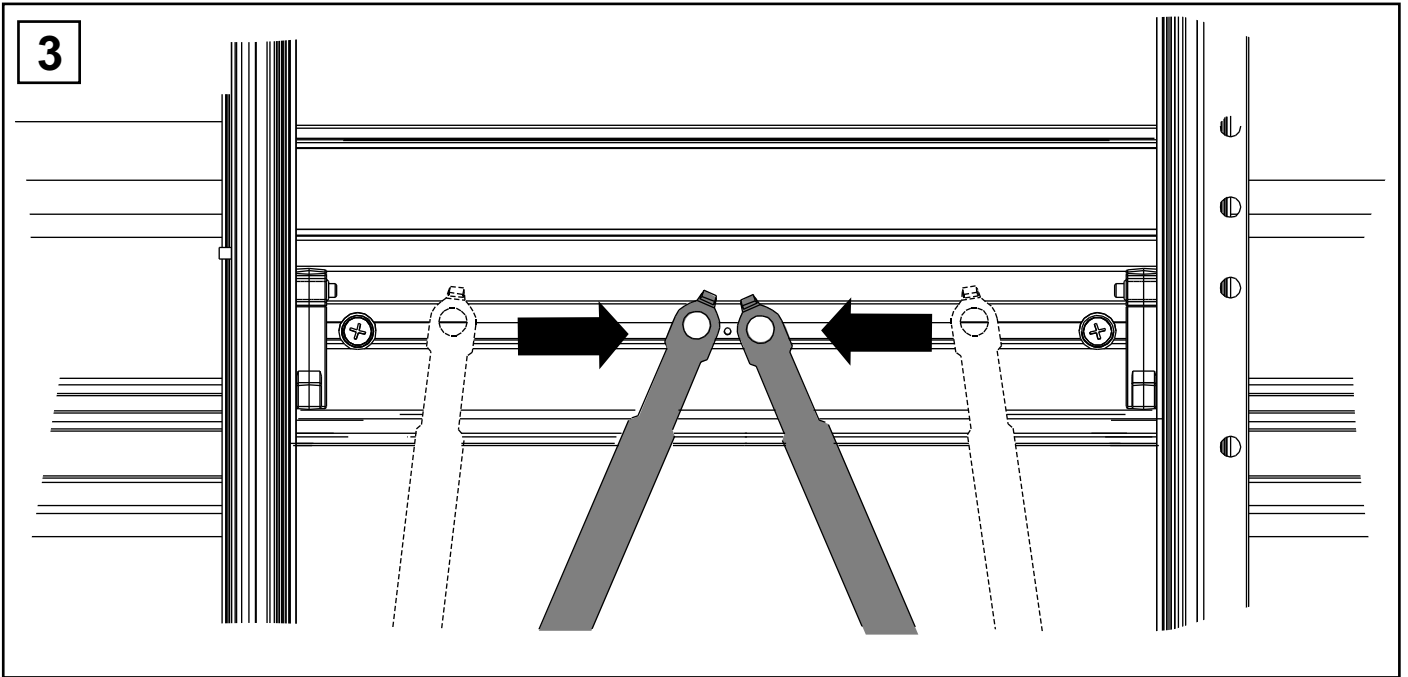
MANUAL RELEASE

1



2





EN SAFETY INSTRUCTIONS

Read this safety instructions thoroughly, before starting up the device and store it in a safe place. If the device is handed over to another person, this manual is to be handed over along with it.

SAFETY INSTRUCTIONS

Caution!

Safety instruction: failure to observe this instruction can cause material damage or personal injury and impair the proper functioning of the device.

Caution!

Safety instruction relating to danger emanating from electrical currents or voltage: failure to observe this instruction can cause material damage or personal injury and impair the proper functioning of the device.

The manufacturer will not be held liable for claims for damage resulting from the following:

- Faulty assembly or connection
- Damage to the appliance resulting from mechanical influences and excess voltage
- Alterations to the device without express permission from the manufacturer
- Use for purposes other than those described in the operating manual

Warning!

To prevent short circuits, always disconnect the negative terminal of the electrical system before working on the vehicle. If the vehicle has an additional battery, its negative terminal should also be disconnected.

Warning!

Inadequate supply cable connections could result in short circuits with the consequence that:

- cable fires occur
- the airbag is triggered
- electronic control devices are damaged
- electric functions fail (indicators, brake light, horn, ignition, lights)

Caution!

Installing the wrong fuse can cause cable fire in case of a short circuit or malfunction!

Thule NV is not responsible for any misprints.

This instruction may be changed without prior notice. We do not accept responsibility for any possible errors in the content