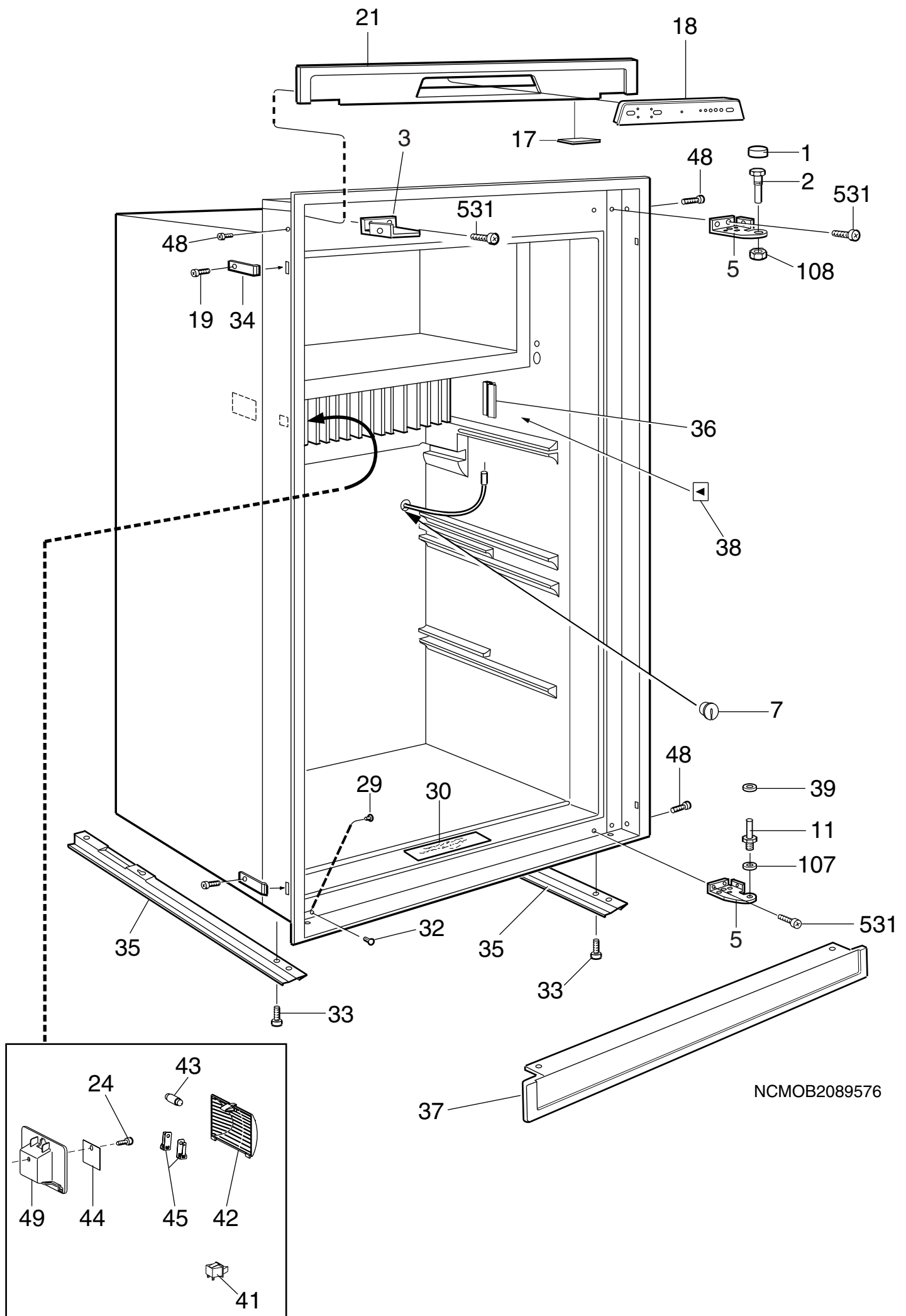




Absorption refrigerators
3110

| PNC | ELC | Brand | Model | Market |
|-----------|-----|---------|--------|---------|
| 921142121 | 00 | Dometic | RM2555 | AU - NZ |

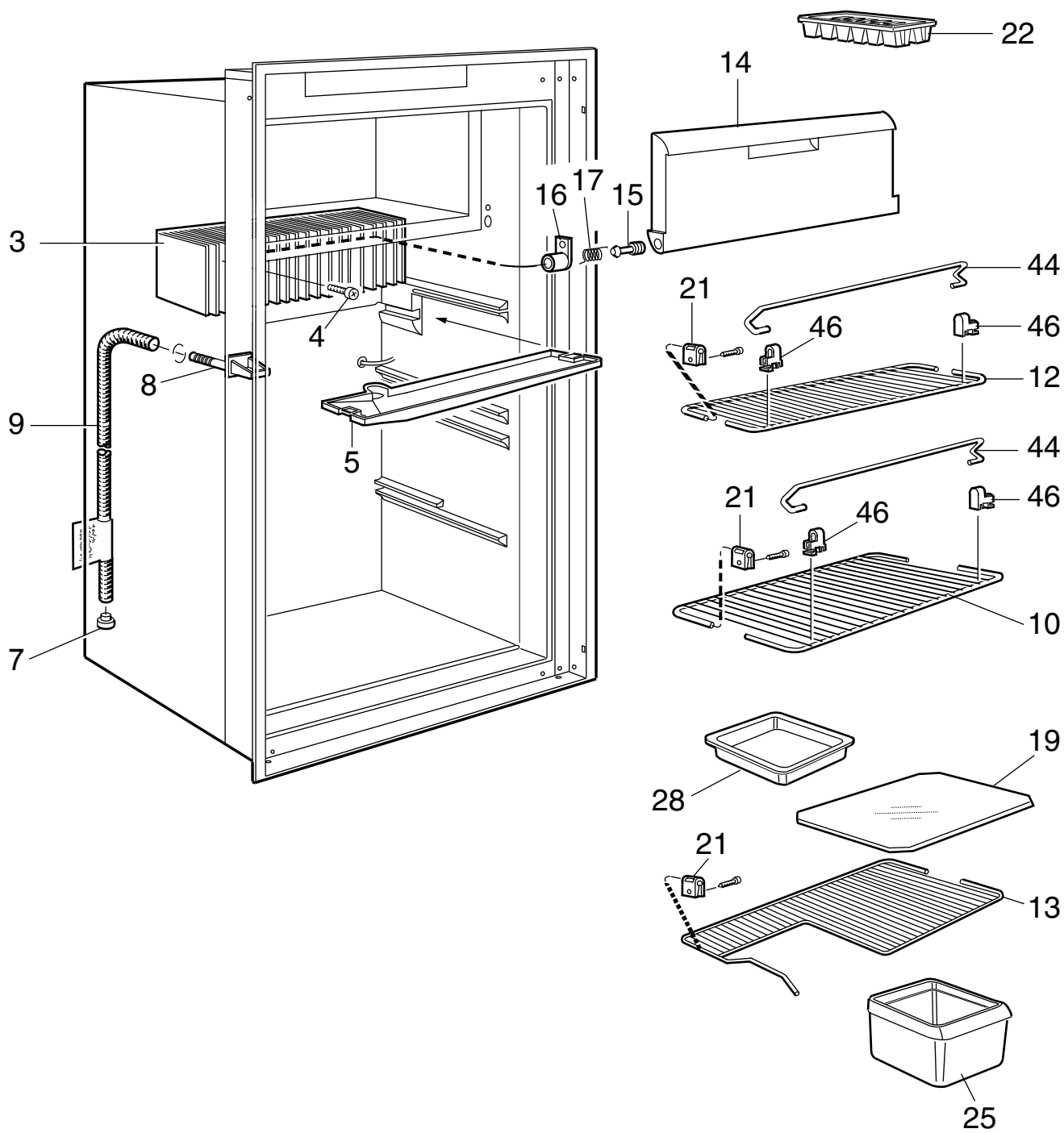
| | | |
|----------------|--|-----------------------|
| | | Caravan refrigerators |
| Dometic Motala | Publication-No. 599528400 2006/12/11 MO | |



Exploded view no.: NCMOB2089576
N00002089576

| | | | | |
|---------------|------------|------------|-----------------|--------------|
| Matrix | PNC | ELC | ProdDate | Model |
| A | 921142121 | 00 | 20061107 | RM2555 |

| Pos | Part No. | Matrix | Description |
|-----|------------|--------|--|
| 1 | 2932736081 | A | Cover,black |
| 2 | 2932647015 | A | Hinge pin,upper |
| 3 | 2932644038 | A | Bracket,left,black |
| 5 | 2932643030 | A | Hinge,black |
| 7 | 2002301006 | A | Cover |
| 11 | 2932649011 | A | Hinge pin,lower |
| 17 | 2932330018 | A | Covering washer |
| 18 | 3850741020 | A | Display,assembly,black,AESIII |
| 19 | 3858002052 | A | Screw,zinc-plated,RXS B6X6,5 |
| 21 | 2932641034 | A | Front,black |
| 24 | 3858006012 | A | Screw,PT PH4x10 |
| 29 | 2930740077 | A | Cover,black |
| 30 | 3850953005 | A | Instruction plate |
| 32 | 3850585039 | A | Plug,black |
| 33 | 3858039096 | A | Screw,zinc-plated,MRX M5X14 |
| 34 | 2932855014 | A | Fastening bow |
| 35 | 2932660018 | A | Rail |
| 36 | 3851088017 | A | Bracket,thermistor |
| 37 | 2932690049 | A | Base cover,black |
| 38 | 2933180016 | A | Label |
| 39 | 3858010022 | A | Washer,black,5,5X12X1 |
| 41 | 3851000012 | A | Switch |
| 42 | 3850962014 | A | Lamp glass |
| 43 | 2007290006 | A | Lamp,10W,12V |
| 44 | 3850963012 | A | Reflector |
| 45 | 2932108018 | A | Contact pin |
| 48 | 3858004058 | A | Screw,zinc-plated,MRX M4X4 |
| 49 | 3850961016 | A | Lamp housing |
| 107 | 3858010113 | A | Washer,zinc-plated,BRB 6,4X12,5 |
| 108 | 3858009057 | A | Nut,black,ML6 M6 |
| 531 | 3858039047 | A | Screw,zinc-plated,MRX M4X10 |
| 999 | 2932750132 | A | Door reversing kit,right-left,black not shown |

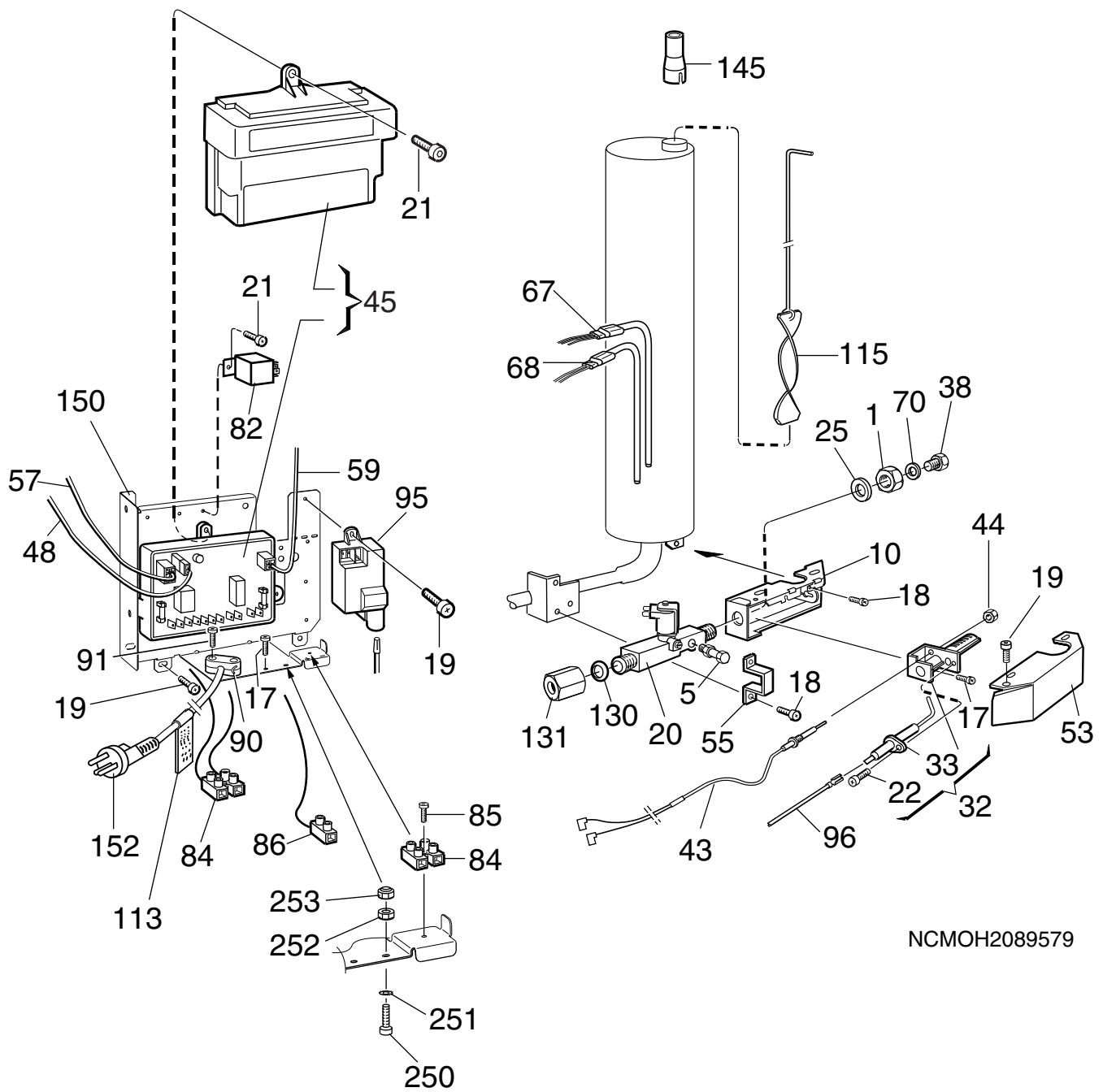


NCMOD2079609

Exploded view no.: NCMOD2079609
N00002089578

| | | | | |
|---------------|------------|------------|-----------------|--------------|
| Matrix | PNC | ELC | ProdDate | Model |
| A | 921142121 | 00 | 20061107 | RM2555 |

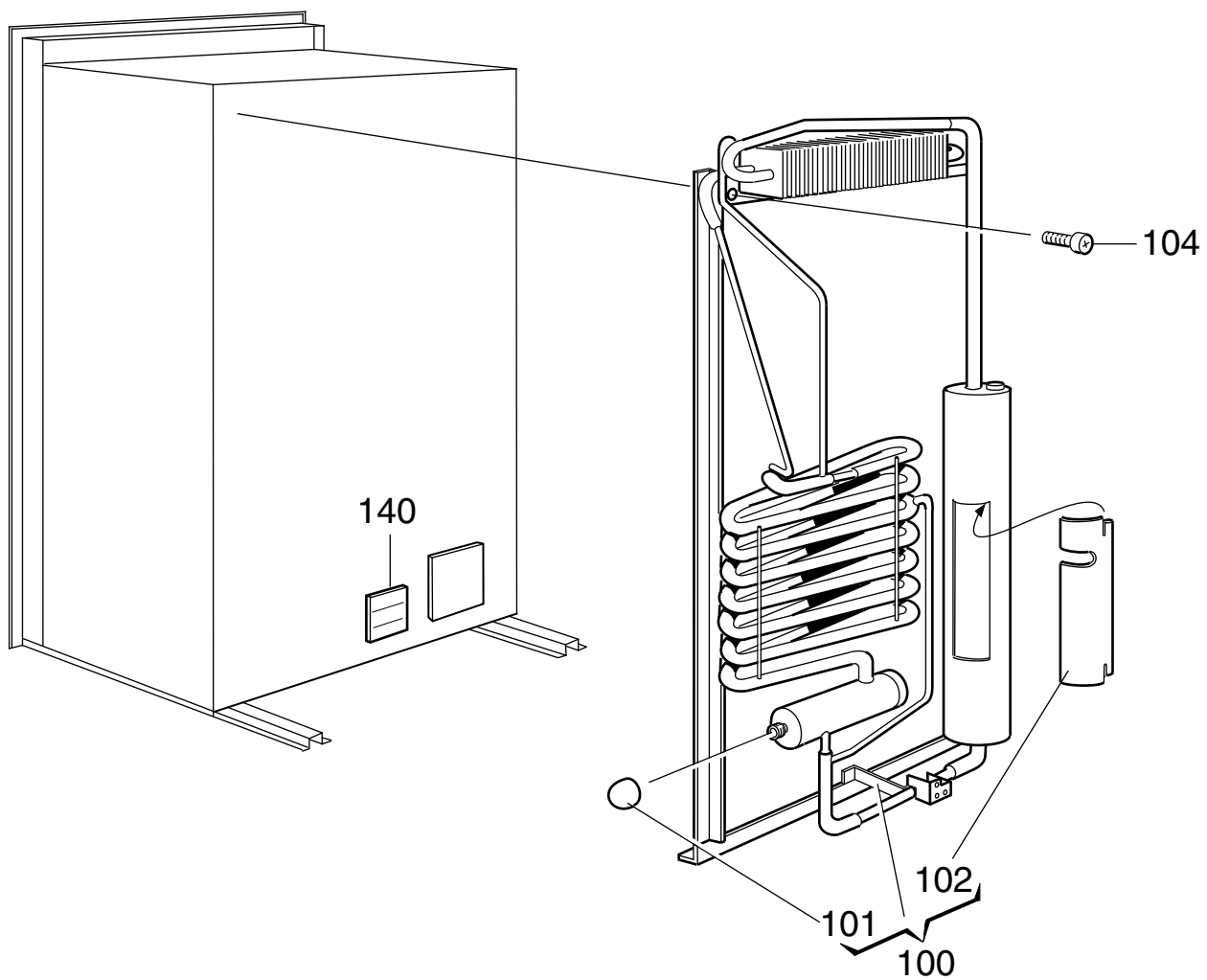
| Pos | Part No. | Matrix | Description |
|------------|-----------------|---------------|-------------------------------|
| 3 | 2932629013 | A | Cooling flange |
| 4 | 3858036019 | A | Screw,zinc-plated,KFXS B10X38 |
| 5 | 2932623016 | A | Evaporation tray |
| 7 | 2932115013 | A | Discharge pipe,plug |
| 8 | 2932635010 | A | Drain |
| 9 | 2932749019 | A | Drain hose |
| 10 | 2932625029 | A | Grating shelf |
| 12 | 2932625060 | A | Grating shelf |
| 13 | 2932626142 | A | Grating shelf |
| 14 | 2932650019 | A | Flap freezer- |
| 15 | 2002238000 | A | Bolt |
| 16 | 2002236004 | A | Spring casing,left |
| 16 | 2002236012 | A | Spring casing,right |
| 17 | 2932754019 | A | Spring,left |
| 17 | 2932754027 | A | Spring,right |
| 19 | 2931117093 | A | Shelf,plastic |
| 21 | 2932668029 | A | Bracket |
| 22 | 2930400003 | A | Ice tray |
| 25 | 2932621010 | A | Supplies |
| 28 | 2932636018 | A | Box |
| 44 | 2007337138 | A | Rack,L=381mm approx 15" |
| 46 | 2930693045 | A | Holder |



NCMOH2089579

| Matrix | PNC | ELC | ProdDate | Model |
|--------|-----------|-----|----------|--------|
| A | 921142121 | 00 | 20061107 | RM2555 |

| Pos | Part No. | Matrix | Description |
|-----|------------|--------|--------------------------------------|
| 1 | 140207044 | A | Nut |
| 5 | 2932097013 | A | Nipple |
| 10 | 2932603018 | A | Burner housing |
| 17 | 3858039039 | A | Screw,zinc-plated,MRX M4X8 |
| 18 | 3858039047 | A | Screw,zinc-plated,MRX M4X10 |
| 19 | 3858002144 | A | Screw,zinc-plated,RXS B6X9,5 |
| 20 | 2932615038 | A | Solenoid valve |
| 21 | 3858002151 | A | Screw,zinc-plated,RXS B6X13 |
| 22 | 3858005014 | A | Screw,zinc-plated,RXK B6X9,5 |
| 25 | 3858010071 | A | Washer,12,5X18,5X1 |
| 32 | 2930697061 | A | Burner |
| 33 | 2930379009 | A | Electrode |
| 38 | 2007419167 | A | Jet,43 |
| 43 | 2932052018 | A | Thermocouple |
| 44 | 2801043015 | A | Nut |
| 45 | 3850610019 | A | Electronics module,assembly,AESI III |
| 48 | 3851059034 | A | Conductor,thermistor |
| 53 | 2932661016 | A | Cover |
| 55 | 2932662014 | A | Bracket |
| 57 | 2954542060 | A | Conductor,PCB |
| 59 | 2954540031 | A | Conductor,complete,solenoid valve |
| 67 | 3850644125 | A | Heater,195W, 240V |
| 68 | 3850646054 | A | Heater,175W, 12V |
| 70 | 2007457001 | A | Washer,0,5mm |
| 82 | 2930385006 | A | Relay |
| 84 | 3858022019 | A | Terminal block |
| 85 | 3858002185 | A | Screw,zinc-plated,RXS B6X25 |
| 86 | 3858062015 | A | Terminal block |
| 90 | 2932342013 | A | Cable clamp |
| 91 | 3858002177 | A | Screw,zinc-plated,RXS B6X19 |
| 95 | 2932347012 | A | Spark generator |
| 96 | 2931360057 | A | Ignition cable |
| 113 | 2932733005 | A | Label |
| 115 | 2007590108 | A | Flame spreader |
| 130 | 2930500000 | A | Seal washer,copper |
| 131 | 3850743018 | A | Connection,nipple |
| 145 | 2932195015 | A | Adaptor |
| 150 | 3850337019 | A | Bracket |
| 152 | 3850555040 | A | Cord set |
| 250 | 3858004033 | A | Screw,zinc-plated,MRX M4X16 |
| 251 | 3858011012 | A | Lock washer,zinc-plated,4,3X8 |
| 252 | 3858009016 | A | Hexagon nut,zinc-plated,M4X3,2 |
| 253 | 3858028024 | A | Lock nut,zinc-plated,M4 |

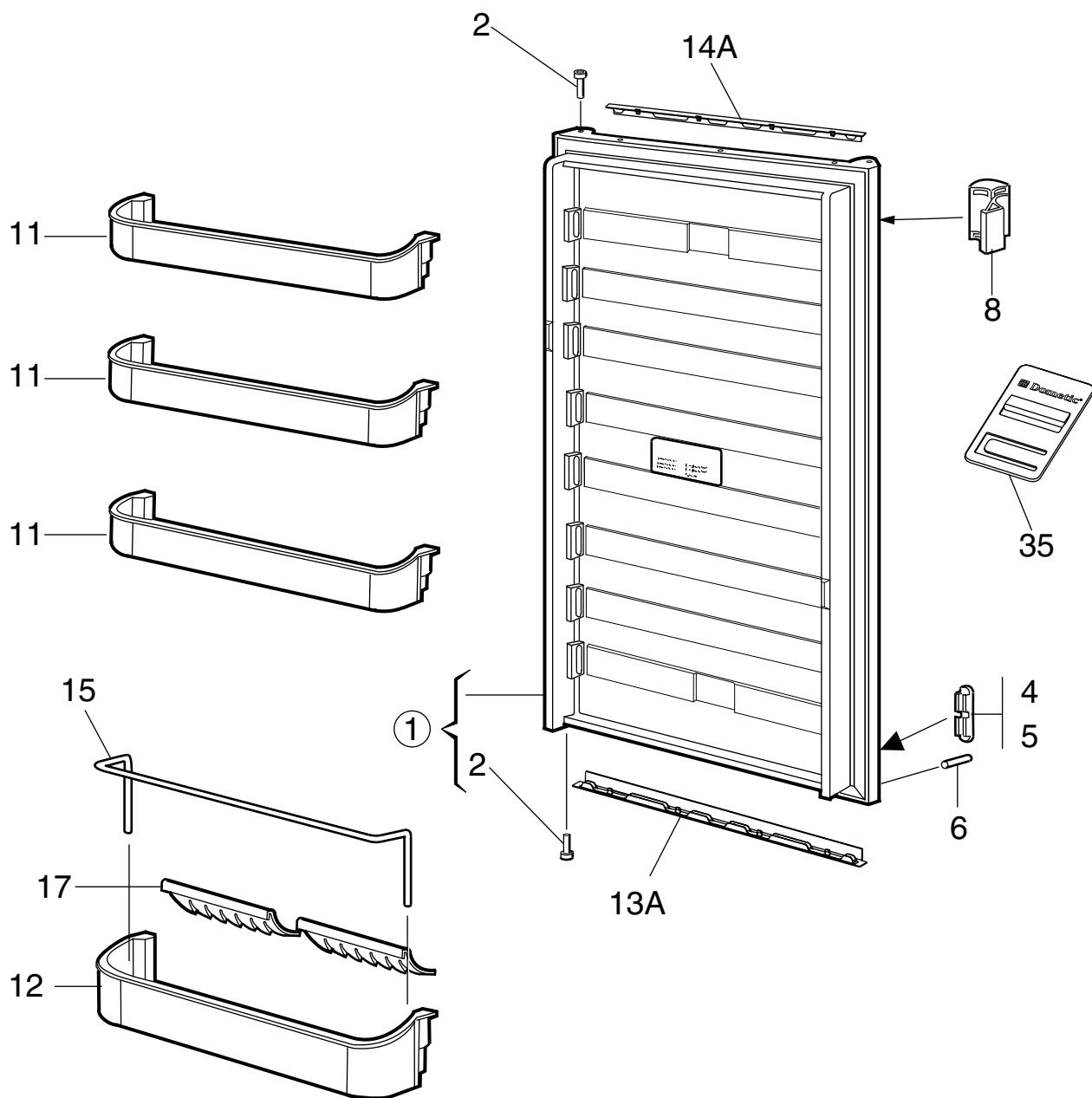


NCMOE2089580

Exploded view no.: NCMOE2089580
N00002089580

| | | | | |
|---------------|------------|------------|-----------------|--------------|
| Matrix | PNC | ELC | ProdDate | Model |
| A | 921142121 | 00 | 20061107 | RM2555 |

| | | | |
|------------|-----------------|---------------|--------------------------|
| Pos | Part No. | Matrix | Description |
| 100 | 2934509098 | A | Cooling unit,509 |
| 101 | 173228008 | A | Cap |
| 102 | 2933557007 | A | Cover sheet |
| 104 | 3858068012 | A | Screw,DK 4.8X16 |
| 140 | 3850582002 | A | Label |
| 999 | 8251240050 | A | User manual not shown |



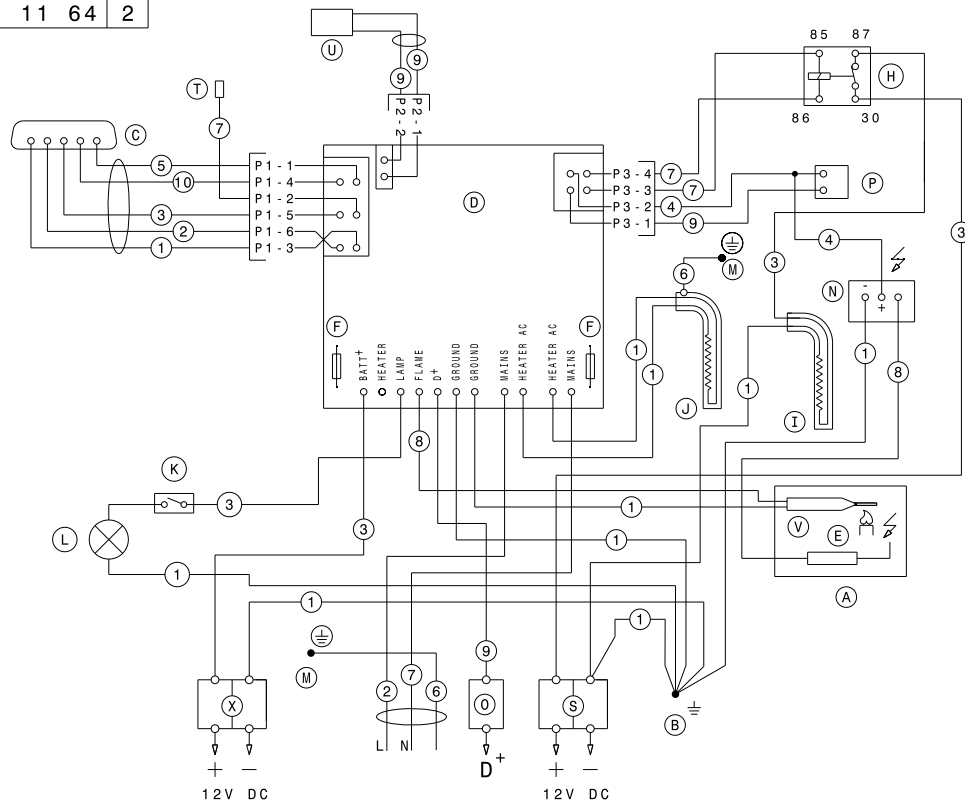
NCMOA2079606

Exploded view no.: NCMOA2079606
N00002089581

| | | | | |
|---------------|------------|------------|-----------------|--------------|
| Matrix | PNC | ELC | ProdDate | Model |
| A | 921142121 | 00 | 20061107 | RM2555 |

| Pos | Part No. | Matrix | Description |
|------------|-----------------|---------------|-----------------------------|
| 1 | 2932562131 | A | Refrigerator door,black |
| 2 | 2931171066 | A | Hinge bushing,black |
| 4 | 2932682038 | A | Plug,upper right,lower left |
| 5 | 2932682046 | A | Plug,upper left,lower right |
| 6 | 2932588011 | A | Stopper |
| 8 | 2932670025 | A | Handle,black |
| 11 | 2932576016 | A | Door shelf |
| 12 | 2932575018 | A | Bottle shelf |
| 13A | 3850919022 | A | Decoration strip,black |
| 14A | 3850919063 | A | Decoration strip,black |
| 15 | 2932585033 | A | Rack |
| 17 | 2932658012 | A | Bottle holder,white |
| 35 | 3851147011 | A | Spacer,door |

385 11 64 2



- | | | |
|-----------------------------|------------------------|--------------------|
| (A) — BURNER HOUSING | (M) — PROTECTIVE EARTH | (1) — BLACK |
| (B) — CHASSIS GROUND | (N) — REIGNITER | (2) — BROWN |
| (C) — CIRCUIT BOARD DISPLAY | (O) — TERMINAL BLOCK | (3) — RED |
| (D) — CIRCUIT BOARD POWER | (P) — SOLENOID VALVE | (4) — YELLOW |
| (E) — ELECTRODE | (S) — TERMINAL BLOCK | (5) — GREEN |
| (F) — FUSE 3A | (T) — TEST POINT | (6) — GREEN/YELLOW |
| (H) — RELAY | (U) — THERMISTOR | (7) — BLUE |
| (I) — HEATER 12V DC | (V) — THERMOCOUPLE | (8) — GREY |
| (J) — HEATER 230,240V AC | (X) — TERMINAL BLOCK | (9) — WHITE |
| (K) — SWITCH LAMP | | (10) — ORANGE |
| (L) — LAMP | | |

N38511642